

## Working Instructions

- mechanical -



*Xperia™ acro S*

*LT26w*

## CONTENTS

<b>1</b>	<b>Exterior Views.....</b>	<b>4</b>
1.1	LT26w.....	4
<b>2</b>	<b>Tools .....</b>	<b>5</b>
<b>3</b>	<b>Disassembly.....</b>	<b>6</b>
3.1	SIM Connector.....	6
3.2	Cover Bottom .....	7
3.3	Core Unit Label.....	7
3.4	Cover Back .....	8
3.5	Keys & Charger PAD connector & Caps.....	9
3.6	Touch/Display Front Cover Assy .....	11
3.7	Gasket Main .....	14
3.8	Camera with the holder.....	14
3.9	Rear Cover Assy .....	15
3.10	Spacer Felica & Sheet Key FPC & PBA Flex Module & PBA .....	16
<b>4</b>	<b>Replacement .....</b>	<b>19</b>
4.1	SIM connector .....	19
4.2	Cover Bottom .....	19
4.3	Core Unit Label.....	19
4.4	Cover Back .....	19
4.5	Key Power.....	20
4.6	Key Volume .....	20
4.7	Key Camera .....	20
4.8	Charger PAD connector.....	20
4.9	Cap SIM.....	21
4.10	Cap Micro SD.....	21
4.11	Cap Micro USB .....	21
4.12	Cap Audio Jack .....	21
4.13	Cap HDMI .....	22
4.14	Touch/Display Front Cover Assy .....	22
4.15	Gasket Main .....	22
4.16	Camera.....	22
4.17	Rear Cover Assy .....	23
4.18	Spacer Felica.....	23
4.19	PBA Flex Module.....	23
4.20	Audio Jack & Foil Adhesive Audio Jack.....	24
4.21	Battery & Foil Adhesive Battery .....	26
4.22	Ear Speaker & Foil Adhesive WP Receiver .....	31
4.23	Gasket Dot Connector .....	34
4.24	Holder Camera.....	35

4.25	Key Gasket (for Key Power & Key Camera)	36
4.26	Key Gasket (for Key Volume)	38
4.27	Label NFC	40
4.28	Lightguide Key Sub Assy	41
4.29	Loudspeaker & Foil Adhesive WP Speaker	43
4.30	Net Speaker	46
4.31	Sheet Key FPC (on the PBA Flex Module)	47
4.32	Sheet Key FPC (on board)	48
4.33	Sheet LED	49
4.34	Sheet Volume Key	50
4.35	Vibrator	51
4.36	Water Indicator	53
4.37	Board Swap - Replacement	55
4.38	Board Swap – Change Label	55
4.39	Board Swap – Customize of Software	55
5	Reassembly	56
5.1	PBA & PBA Flex Module & Sheet Key FPC & Spacer Felica	56
5.2	Rear Cover Assy	59
5.3	Camera with the holder	60
5.4	Gasket Main	61
5.5	Touch/Display Front Cover Assy	62
5.6	Caps & Charger PAD connector & Keys	65
5.7	Cover Back	71
5.8	Core Unit Label	73
5.9	Cover Bottom	74
5.10	SIM Connector	74
6	Revision History	76

**For general information about mechanical repair related issues, refer to  
1220-1333: Generic Repair Manual - mechanical**

## 1 Exterior Views

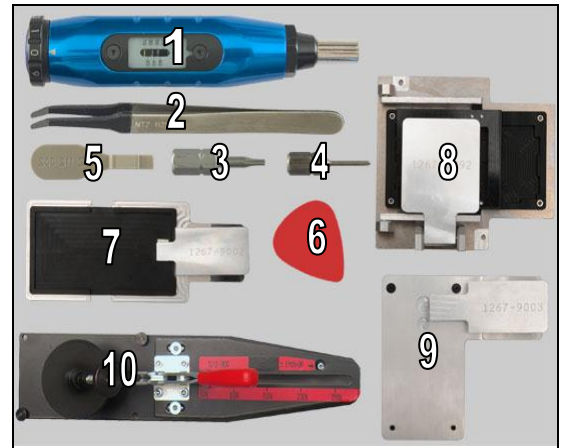
### 1.1 LT26w



## 2 Tools

### SPECIAL TOOLS

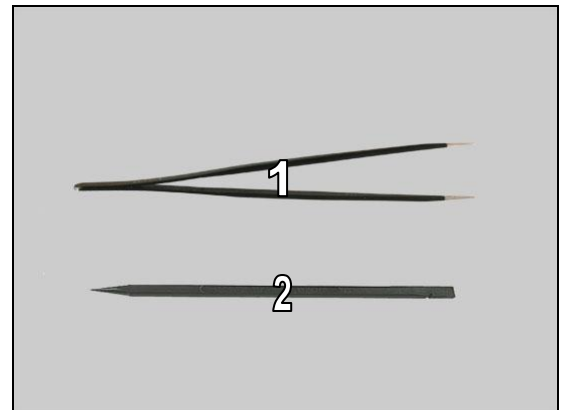
1. Torque Screwdriver
2. Flex Film Assembly Tool
3. Bits (T6)
4. Bits (JCIS No 0)
5. Front Opening Tool
6. Guitar Pick
7. Press Tool Earspeaker
8. Battery Press Insert
9. Press Tool Loudspeaker
10. Pressure Tool



**For part no's on the tools above, refer to the 'Tools Catalogue/Matrix'!**

### STANDARD TOOLS

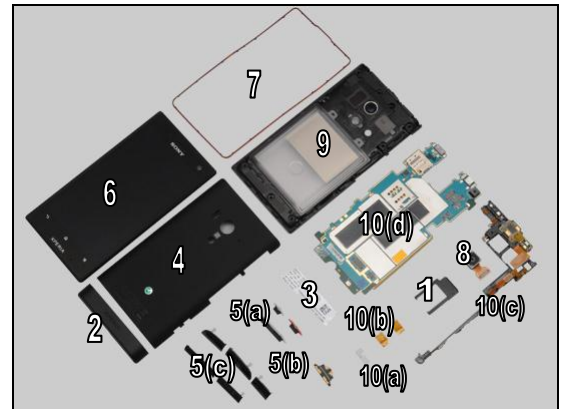
1. Tweezers
2. Nylon Pointer



## 3 Disassembly

The disassembly is done in the following order:

1. SIM Connector
2. Cover Bottom
3. Core Unit Label
4. Cover Back
5. Keys (a) & Charger PAD connector (b) & Caps (c)
6. Touch/Display Front Cover Assy
7. Gasket Main
8. Camera with the holder
9. Rear Cover Assy
10. Spacer Felica (a) & Sheet Key FPC (b) & PBA Flex Module (c) & PBA (d)



### 3.1 SIM Connector

**Do not touch the sealing rubber of the Cap SIM!**

**Make sure that the Cap SIM is clean, no dirt, particles and fiber attached on it!**

Pull upwards to release the Cap SIM with fingers.



Pull out the SIM Connector and remove it.



Turn the Cap SIM over.



## Disassembly

Press to snap the Cap SIM.



### 3.2 Cover Bottom

Push the Cover Bottom to release the hooks as shown in picture.



Pull upwards the Cover Bottom with fingers to release the hooks and remove it.



### 3.3 Core Unit Label

Read the old Label Mobile Phone and write the information into the 'LabelMake' program.

Carefully peel off to remove the Core Unit Label by using a Flex Film Assembly Tool.

**Do not damage the antenna under the Label Core Unit!  
Scrap! Not to be reused!**



## Disassembly

### 3.4 Cover Back

**Do not damage the battery film on the Rear Cover Assy!  
If the battery film is damaged, replace the Rear Cover Assy!**

Insert a Guitar Pick as shown in picture and gently slide along to release this side of the Cover Back.



Do the same on this side as shown.



Insert a Guitar Pick as shown in picture and gently pull upwards to release the hook of the Cover Back.



Do the same to release the hook as shown.





## Disassembly

Do the same on this side.

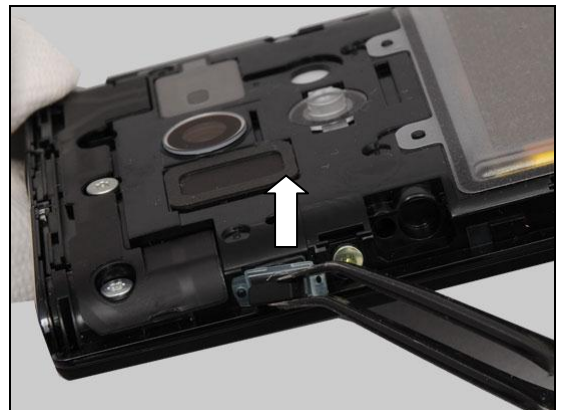


Remove the Cover Back.

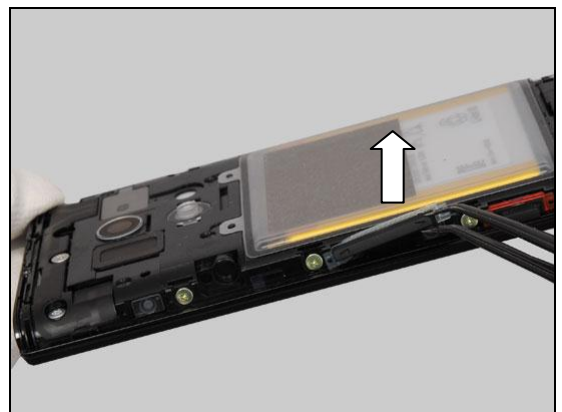


### 3.5 Keys & Charger PAD connector & Caps

Gently remove the Key Power by using a Flex Film Assembly Tool.



Remove the Key Volume.



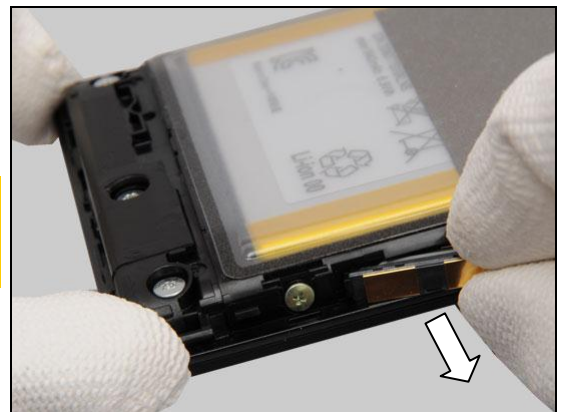
## Disassembly

Remove the Key Camera.



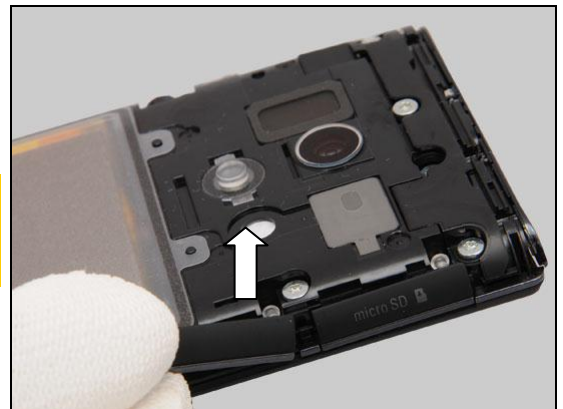
Gently pull outwards to remove the Charger PAD connector.

**Do not touch the O-Ring of the Charger PAD connector!**  
**Make sure that the Charger PAD connector is clean, no dirt, particles and fiber attached on it!**



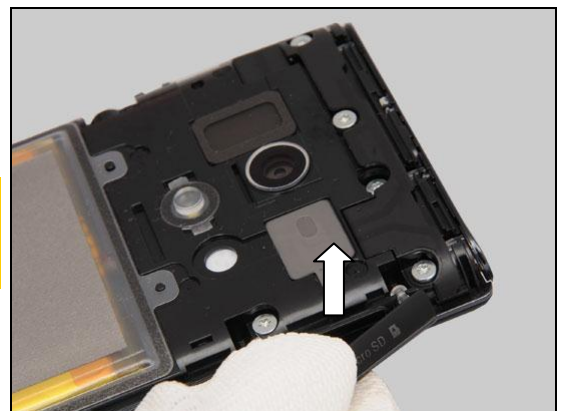
Gently remove the Cap SIM by lifting straight up.

**Do not touch the sealing rubber of the Cap SIM!**  
**Make sure that the Cap SIM is clean, no dirt, particles and fiber attached on it!**



Do the same to remove the Cap Micro SD.

**Do not touch the sealing rubber of the Cap Micro SD!**  
**Make sure that the Cap Micro SD is clean, no dirt, particles and fiber attached on it!**



## Disassembly

Do the same to remove the Cap Micro USB.

**Do not touch the sealing rubber of the Cap Micro USB!**  
**Make sure that the Cap Micro USB is clean, no dirt, particles and fiber attached on it!**



Do the same to remove the Cap Audio Jack.

**Do not touch the sealing rubber of the Cap Audio Jack!**  
**Make sure that the Cap Audio Jack is clean, no dirt, particles and fiber attached on it!**



Do the same to remove the Cap HDMI.

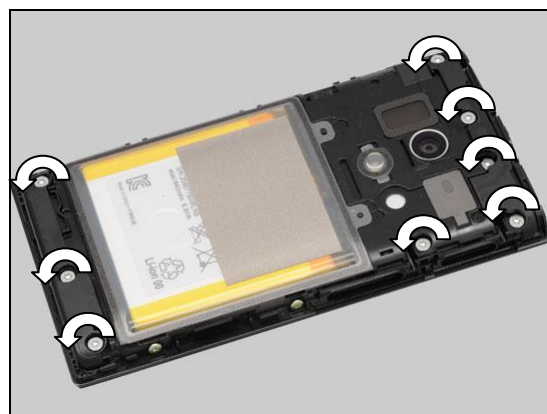
**Do not touch the sealing rubber of the Cap HDMI!**  
**Make sure that the Cap HDMI is clean, no dirt, particles and fiber attached on it!**



### 3.6 Touch/Display Front Cover Assy

Remove these eight screws Len:5.0 Diam:1.7 O-Ring by using a screwdriver with Bits (T6).

**Scrap! Not to be reused!**



## Disassembly

Remove the two screws Len:2.8 Diam:1.4 O-Ring M by using a screwdriver with Bits (JCIS No 0).

**Scrap! Not to be reused!**



Remove the three screws Len:2.8 Diam:1.4 O-Ring M by using a screwdriver with Bits (JCIS No 0).

**Scrap! Not to be reused!**



Insert a Guitar Pick as shown in picture and gently slide along to release this side.



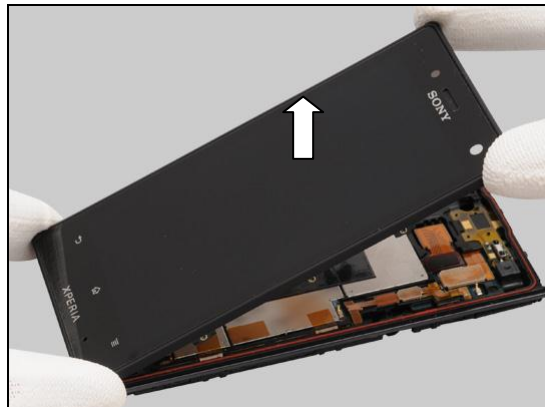
Do the same on the opposite side.





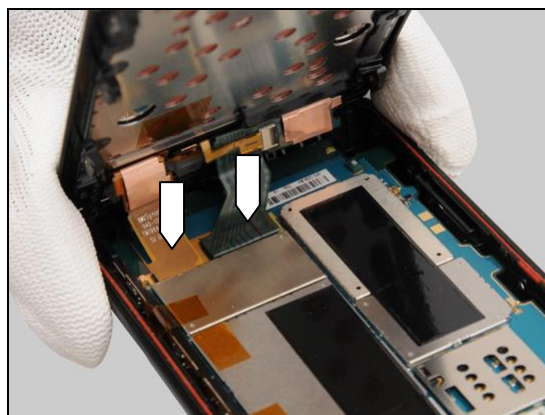
## Disassembly

Turn the phone over and gently lift up the Touch/Display Front Cover Assy at approximately 45 degree as shown in picture.



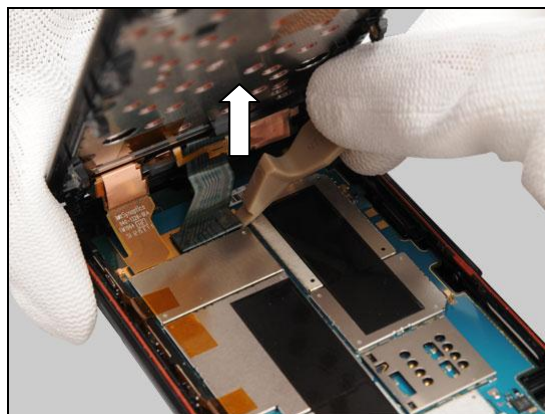
There are two BtB connectors of the Touch/Display Front Cover Assy.

**Do not stretch these two FPCs!**



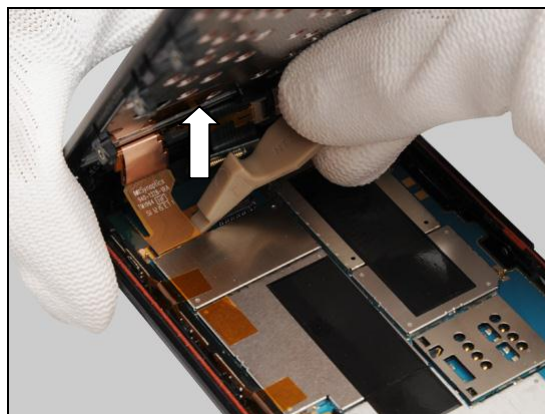
Disconnect the BtB connector by using a Front Opening Tool.

**Be careful! Do not damage the components around the BtB connector!**



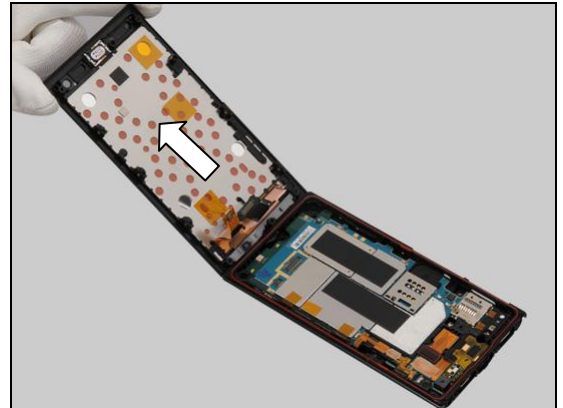
Do same to release the second BtB connector.

**Be careful! Do not damage the components around the BtB connector!**



## Disassembly

Remove the Touch/Display Front Cover Assy.

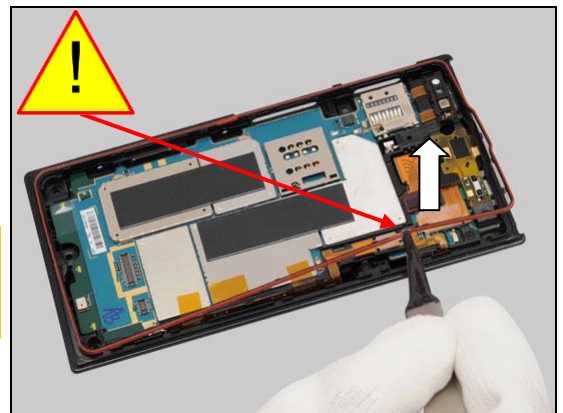


### 3.7 Gasket Main

Gently lift up the Gasket Main to remove it by using a Flex Film Assembly Tool as shown in picture.

**Do not damage the Gasket Main!**

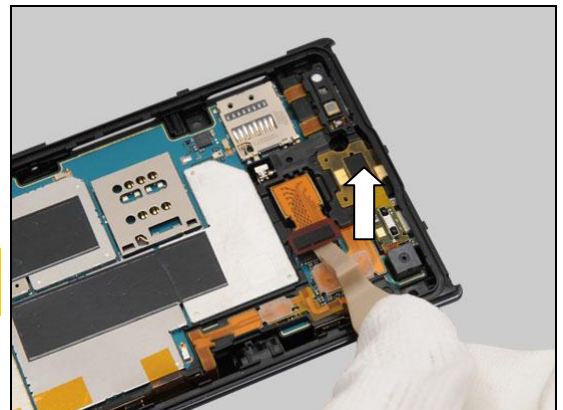
**Make sure that the Gasket Main is clean, no dirt, particles and fiber attached on it!**



### 3.8 Camera with the holder

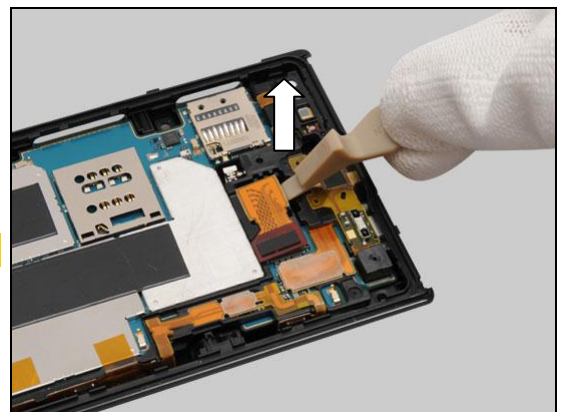
Disconnect the BtB connector by using a Front Opening Tool.

**Be careful! Do not damage the components around the BtB connector!**



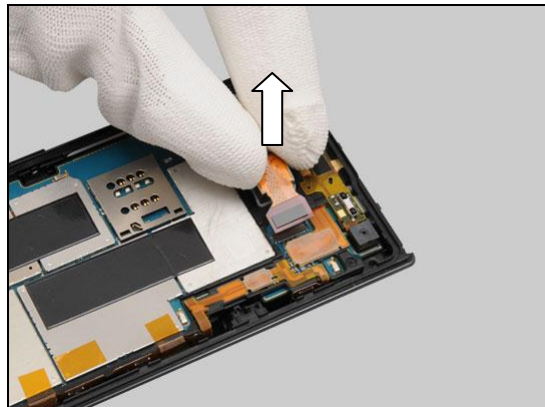
Insert the Front Opening Tool and gently pull upwards to release the Camera from the cavity.

**Be careful! Do not damage the Camera!**



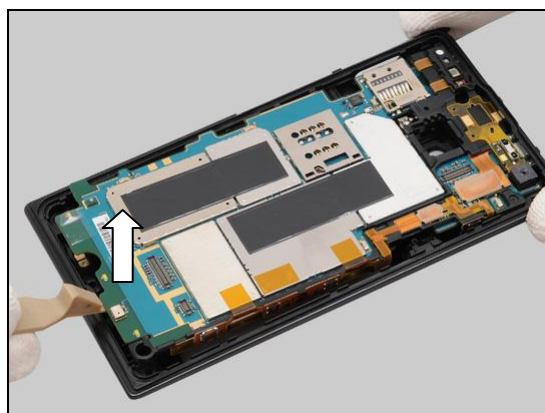
## Disassembly

Remove it with fingers.

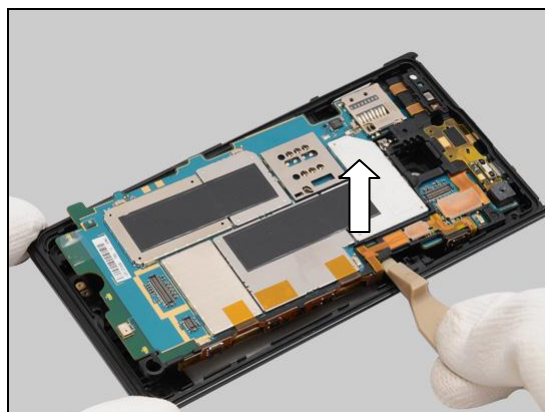


### 3.9 Rear Cover Assy

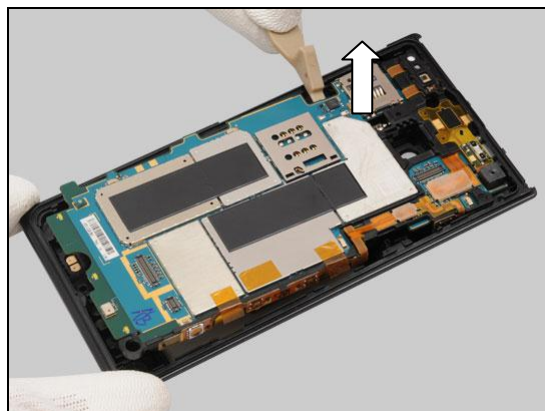
Insert a Front Opening Tool as shown in picture and gently pull upwards to release the hooks of PBA.



Do the same to release the hooks on this side.



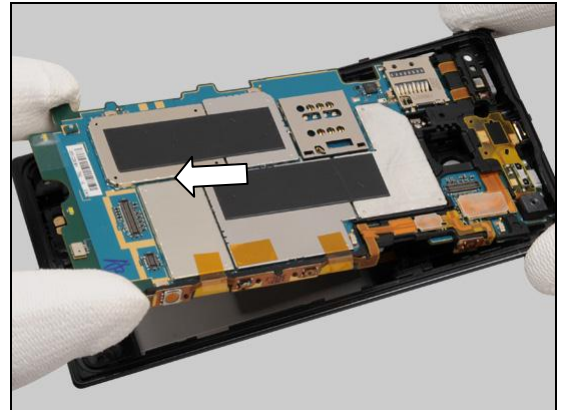
Do the same to release the hooks on opposite side.





## Disassembly

Pull to release the PBA and remove the Rear Cover Assy as shown.



### 3.10 Spacer Felica & Sheet Key FPC & PBA Flex Module & PBA

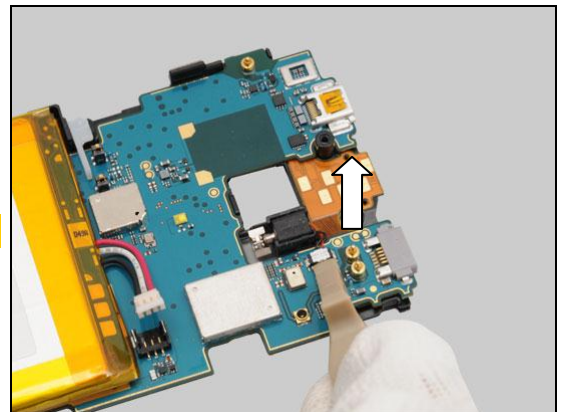
Turn the PBA over and disconnect the connector of Battery.

**Be careful! Do not damage the connector!**



Disconnect the connector of the Vibrator.

**Be careful! Do not damage the connector!**



Gently pull upwards to remove the Spacer Felica with a Flex Film Assembly Tool.

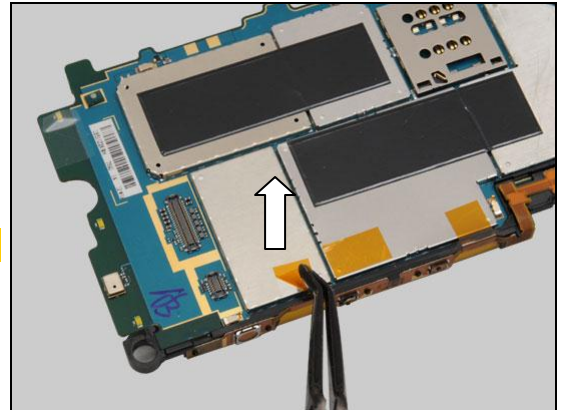




## Disassembly

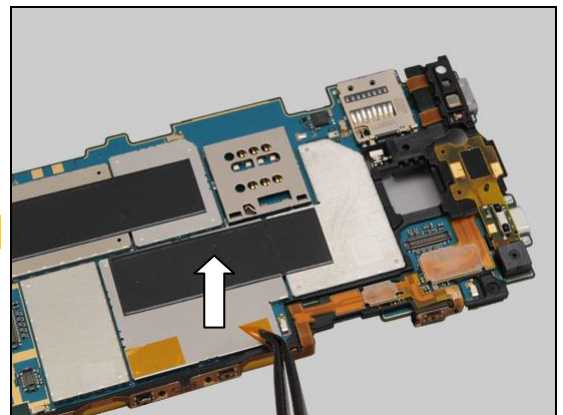
Turn the PBA over and gently peel off the Sheet Key FPC by using a Flex Film Assembly Tool.

**Scrap! Not to be reused!**



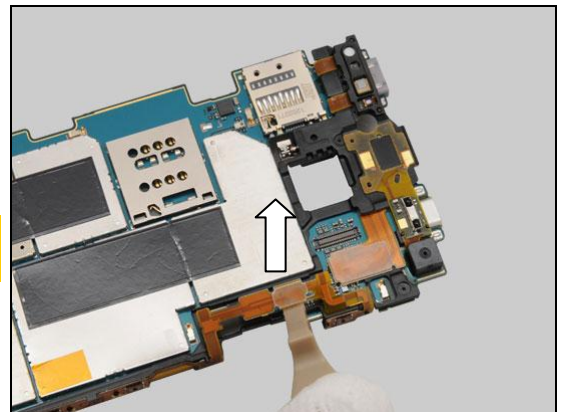
Do the same to remove the second Sheet Key FPC.

**Scrap! Not to be reused!**



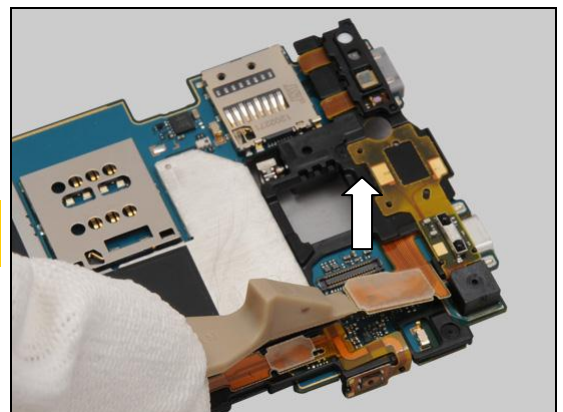
Disconnect the BtB connector by using a Front Opening Tool.

**Be careful! Do not damage the components around the BtB connector!**



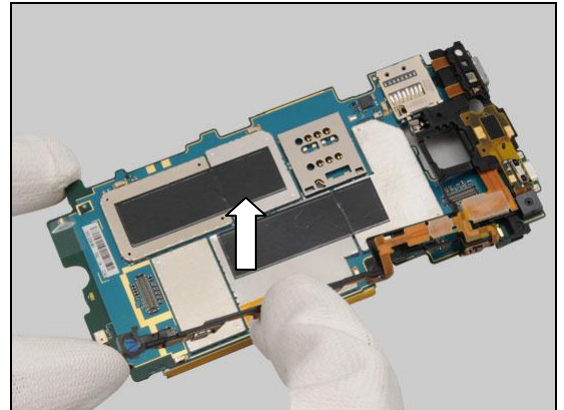
Disconnect the other BtB connector.

**Be careful! Do not damage the components around the BtB connector!**

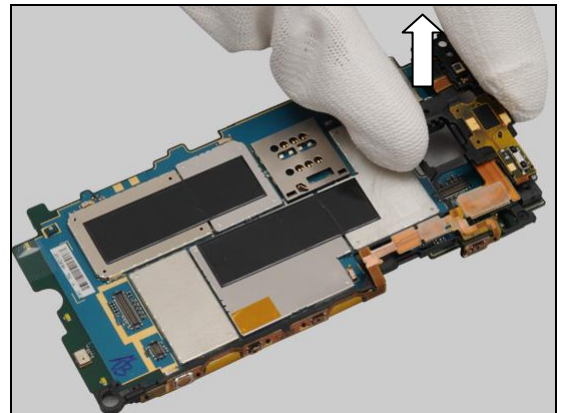


## Disassembly

Gently pull outwards to release this side of the PBA Flex Module.



Remove the PBA Flex Module from this side as shown.



## 4 Replacement

### 4.1 SIM connector

*Follow the 3.1 Disassembly instructions!*

Prepare a new SIM Connector.

*Follow the 5.10 Reassembly instructions!*



### 4.2 Cover Bottom

*Follow the 3.2 Disassembly instructions!*

Prepare a new Cover Bottom.

*Follow the 5.9 Reassembly instructions!*

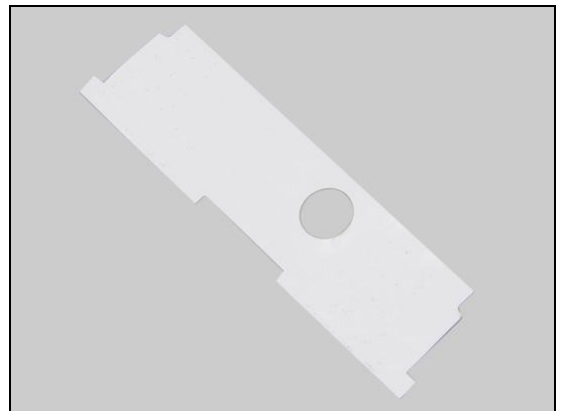


### 4.3 Core Unit Label

*Follow the 3.2 – 3.3 Disassembly instructions!*

Prepare a new Core Unit Label.

*Follow the 5.8 – 5.9 Reassembly instructions!*



### 4.4 Cover Back

*Follow the 3.2 – 3.4 Disassembly instructions!*

Prepare a new Cover Back.

*Follow the 5.7 – 5.9 Reassembly instructions!*

*Follow the 4.27 Installation instructions!*



## Replacement

### 4.5 Key Power

*Follow the 3.2 – 3.5 Disassembly instructions!*

Prepare a new Key Power.

*Follow the 5.6 – 5.9 Reassembly instructions!*



### 4.6 Key Volume

*Follow the 3.2 – 3.5 Disassembly instructions!*

Prepare a new Key Volume.

*Follow the 5.6 – 5.9 Reassembly instructions!*



### 4.7 Key Camera

*Follow the 3.2 – 3.5 Disassembly instructions!*

Prepare a new Key Camera.

*Follow the 5.6 – 5.9 Reassembly instructions!*

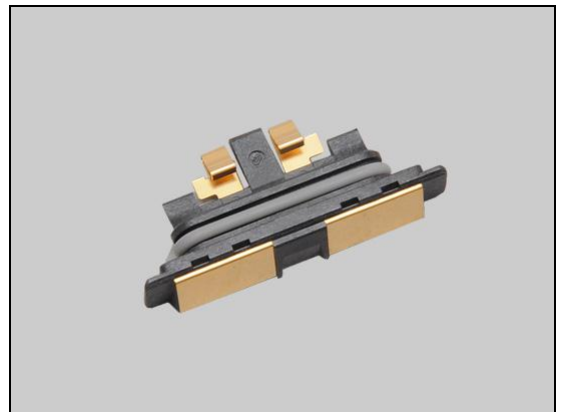


### 4.8 Charger PAD connector

*Follow the 3.2 – 3.5 Disassembly instructions!*

Prepare a new Charger PAD connector.

*Follow the 5.6 – 5.9 Reassembly instructions!*



## Replacement

### 4.9 Cap SIM

*Follow the 3.2 – 3.5 Disassembly instructions!*

Prepare a new Cap SIM.

*Follow the 5.6 – 5.9 Reassembly instructions!*



### 4.10 Cap Micro SD

*Follow the 3.2 – 3.5 Disassembly instructions!*

Prepare a new Cap Micro SD.

*Follow the 5.6 – 5.9 Reassembly instructions!*



### 4.11 Cap Micro USB

*Follow the 3.2 – 3.5 Disassembly instructions!*

Prepare a new Cap Micro USB.

*Follow the 5.6 – 5.9 Reassembly instructions!*



### 4.12 Cap Audio Jack

*Follow the 3.2 – 3.5 Disassembly instructions!*

Prepare a new Cap Audio Jack.

*Follow the 5.6 – 5.9 Reassembly instructions!*



## Replacement

### 4.13 Cap HDMI

*Follow the 3.2 – 3.5 Disassembly instructions!*

Prepare a new Cap HDMI.

*Follow the 5.6 – 5.9 Reassembly instructions!*



### 4.14 Touch/Display Front Cover Assy

*Follow the 3.1 – 3.6 Disassembly instructions!*

*Follow the 4.28 Removal instructions!*

Prepare a new Touch/Display Front Cover Assy.

*Follow the 4.28 Installation instructions!*

*Follow the 5.5 – 5.10 Reassembly instructions!*

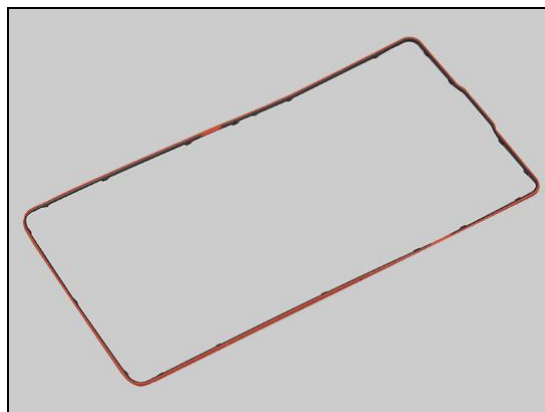


### 4.15 Gasket Main

*Follow the 3.1 – 3.7 Disassembly instructions!*

Prepare a new Gasket Main.

*Follow the 5.4 – 5.10 Reassembly instructions!*



### 4.16 Camera

*Follow the 3.1 – 3.8 Disassembly instructions!*

*Follow the 4.24 Removal instructions!*

Prepare a new Camera.

*Follow the 4.24 Installation instructions!*

*Follow the 5.3 – 5.10 Reassembly instructions!*





## Replacement

### 4.17 Rear Cover Assy

*Follow the 3.1 – 3.9 Disassembly instructions!*

*Follow the 4.20 Removal instructions!*

Prepare a new Rear Cover Assy.

*Follow the 4.20, 4.25, 4.26 and 4.34 Installation instructions!*

*Follow the 5.2 – 5.10 Reassembly instructions!*



### 4.18 Spacer Felica

*Follow the 3.1 – 3.10 Disassembly instructions!*

Prepare a new Spacer Felica.

*Follow the 5.1 – 5.10 Reassembly instructions!*



### 4.19 PBA Flex Module

*Follow the 3.1 – 3.10 Disassembly instructions!*

*Follow the 4.35 Removal instructions!*

Prepare a new PBA Flex Module.

*Follow the 4.35 Installation instructions!*

*Follow the 5.1 – 5.10 Reassembly instructions!*



## Replacement

### 4.20 Audio Jack & Foil Adhesive Audio Jack

*Follow the 3.1 – 3.9 Disassembly instructions!*

Carry out the Removal as described below.

Prepare a new Audio Jack and a new Foil Adhesive Audio Jack.

Carry out the Installation as described below.

*Follow the 5.2 – 5.10 Reassembly instructions!*

#### REMOVAL

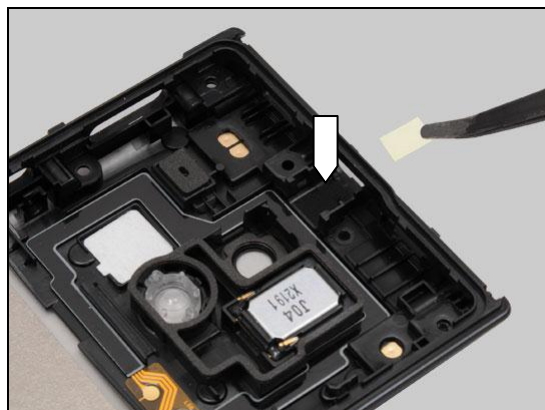
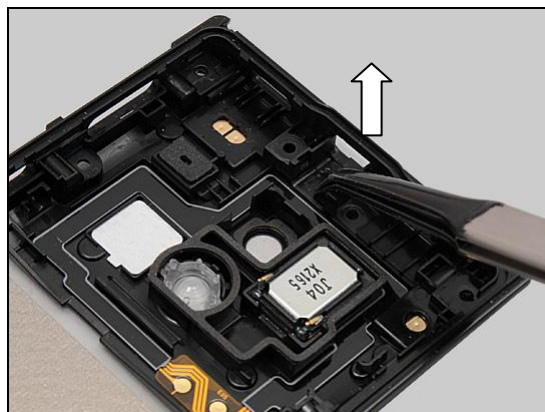
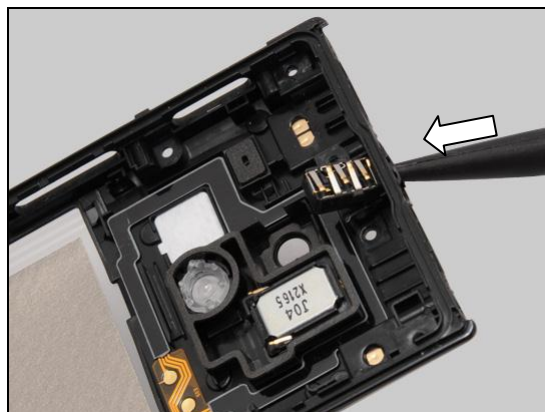
Insert a Nylon Pointer into the hole of the Audio Jack and pull upwards to release it.

Peel off the Foil Adhesive Audio Jack by using a Flex Film Assembly Tool.

**Scrap! Not to be reused.**

#### INSTALLATION

Place a new Foil Adhesive Audio Jack into the socket.



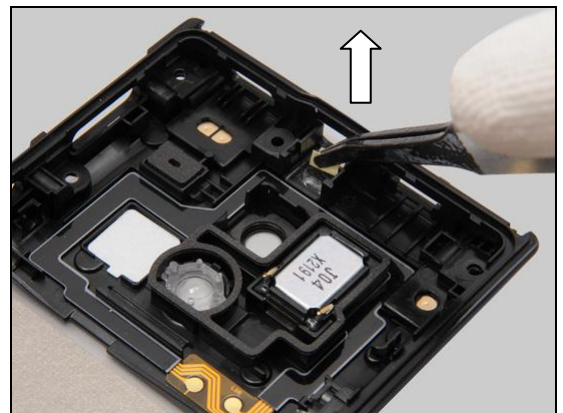


## Replacement: Audio Jack & Foil Adhesive Audio Jack

Press to secure its attachment.



Peel off the protective film.

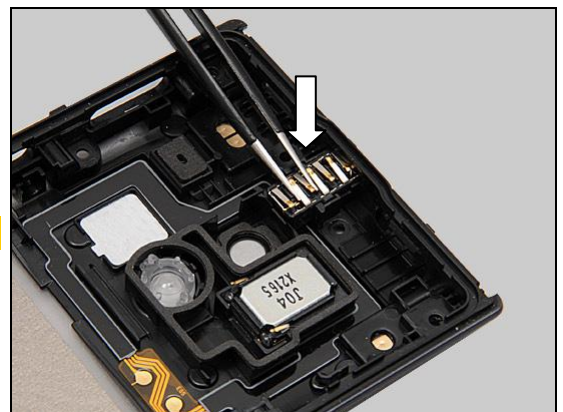


Place a new Audio Jack into the socket.



Press to secure its attachment.

**Do not touch the contact pins!**



## Replacement

### 4.21 Battery & Foil Adhesive Battery

*Follow the 3.1 – 3.10 Disassembly instructions!*

Carry out the Removal as described below.

Prepare a new Battery and a new Foil Adhesive Battery.

Carry out the Installation as described below.

*Follow the 5.1 – 5.10 Reassembly instructions!*

**Battery and Foil Adhesive Battery cannot be reused!**

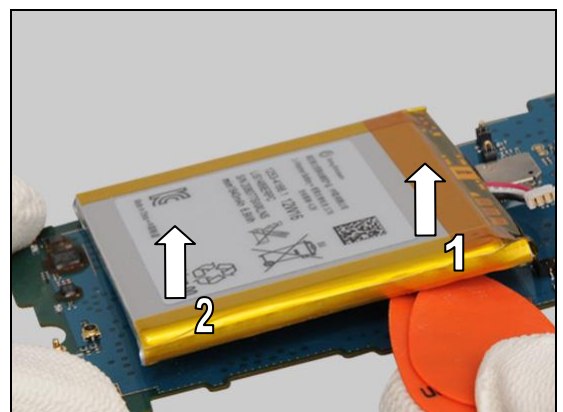
#### REMOVAL

**Carefully slide and lift in below removal actions! Do not deform the PBA! Do not damage the components on the PBA!**

Insert two Guitar Picks into the gap between the Battery and the PBA as shown and gently slide back and forth to detach the Battery.

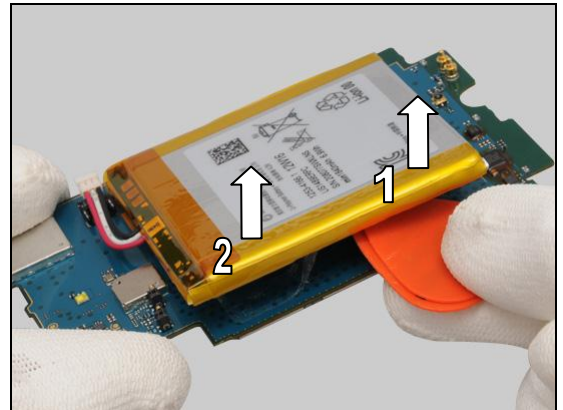
First insert one Guitar Pick to slide and gently lift upwards to make a gap between the Battery and the PBA on the opposite side, then insert two Guitar Picks and gently slide back and forth to release this side.

Gently lift upwards to release this side by using two Guitar Picks as shown.



## Replacement: Battery & Foil Adhesive Battery

Do the same to the opposite side.

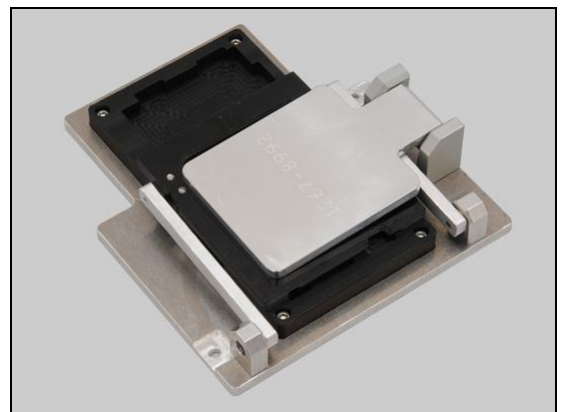


Remove the Battery.

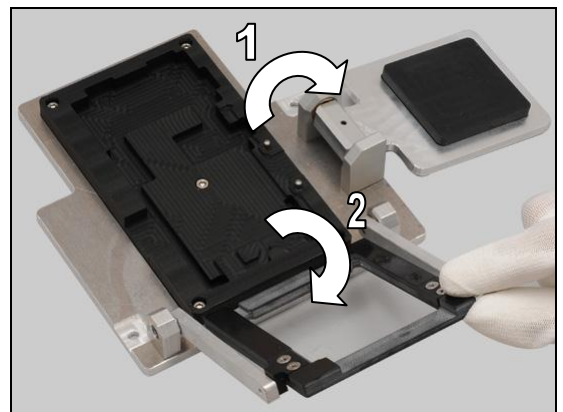


### INSTALLATION

Prepare the Battery Press Insert.



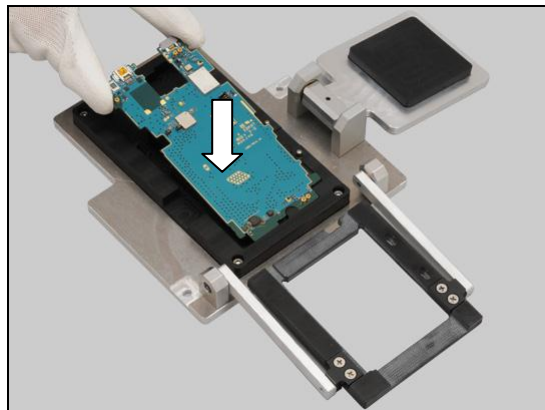
Open the tool.





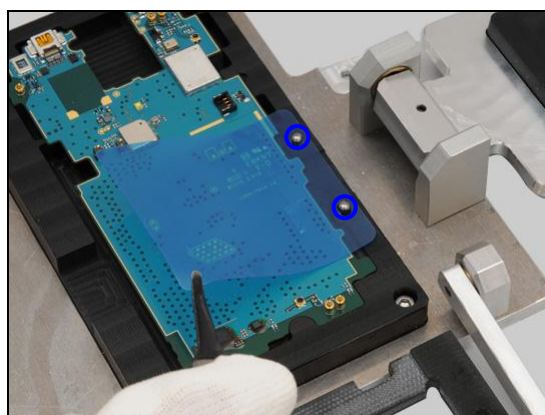
## Replacement: Battery & Foil Adhesive Battery

Place the PBA in the cavity.

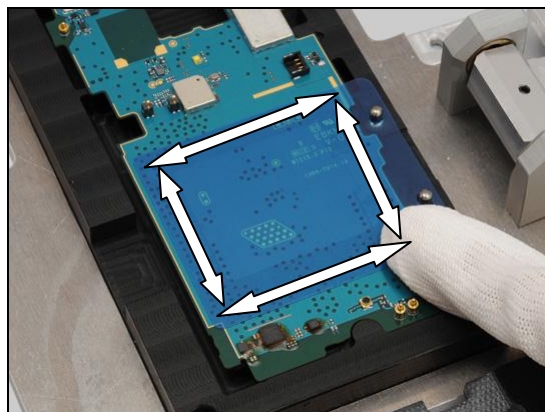


**Clean the residues of adhesive before this action!**

Prepare a new Foil Adhesive Battery and gently place it on the Battery Press Insert as indicated by the holes and location pins.

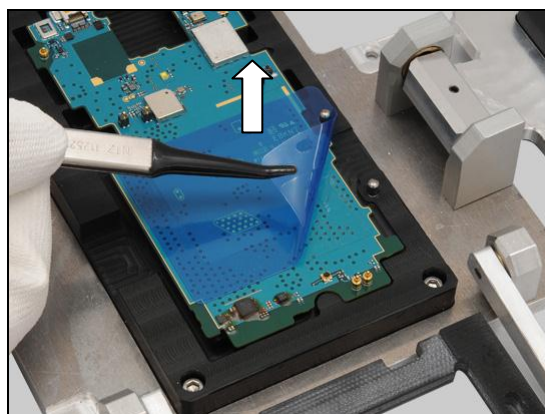


Press along to secure its attachment and position.



Peel off the protective film.

**Be careful! Do not peel off Foil Adhesive Battery with the film.**

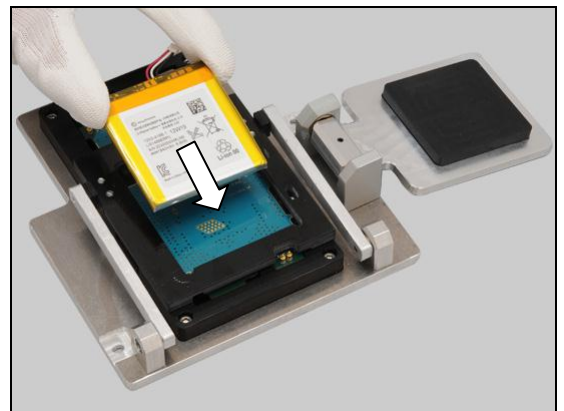


## Replacement: Battery & Foil Adhesive Battery

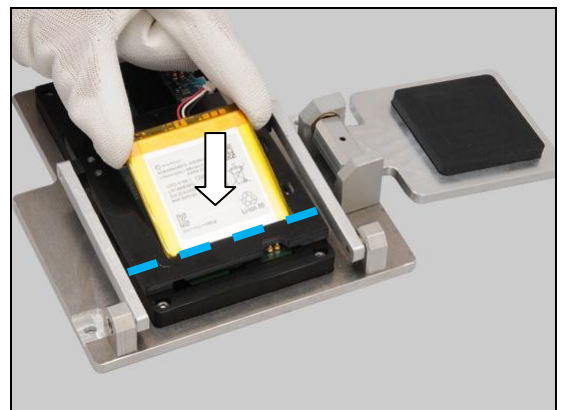
Turn it over.



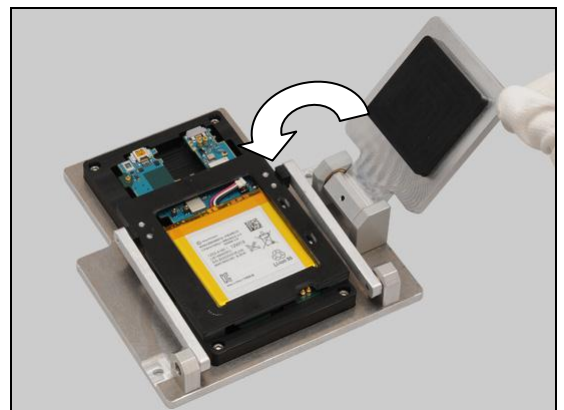
Prepare a new Battery and insert it into the cavity as shown.



Securely place the Battery in the cavity in alignment with the tool as shown.

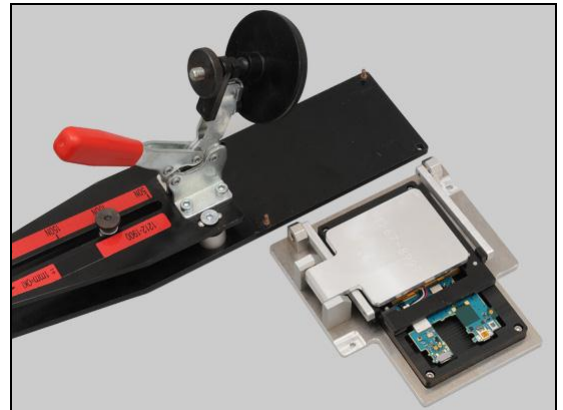


Close it.

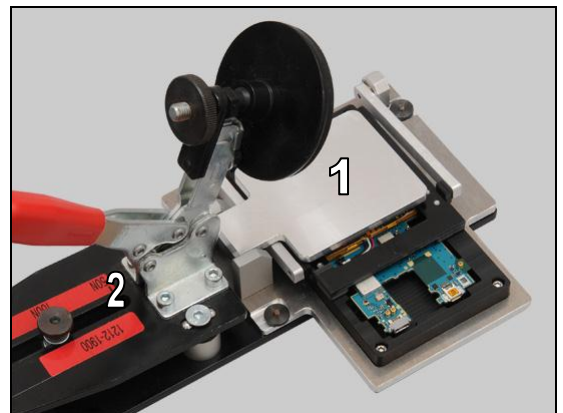


## Replacement: Battery & Foil Adhesive Battery

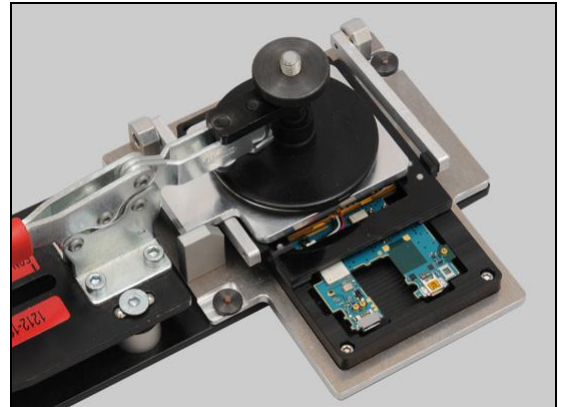
Prepare the Pressure Tool as shown.



Fasten the Battery Press Insert assembly (1) to the Pressure Tool (2).



Press it with a pressure value of 100N for  $5 \pm 1$  seconds.



Make sure the Battery is securely attached.



## Replacement

### 4.22 Ear Speaker & Foil Adhesive WP Receiver

*Follow the 3.1 – 3.6 Disassembly instructions!*

Carry out the Removal as described below.

Prepare a new Ear Speaker and a new Foil Adhesive WP Receiver.

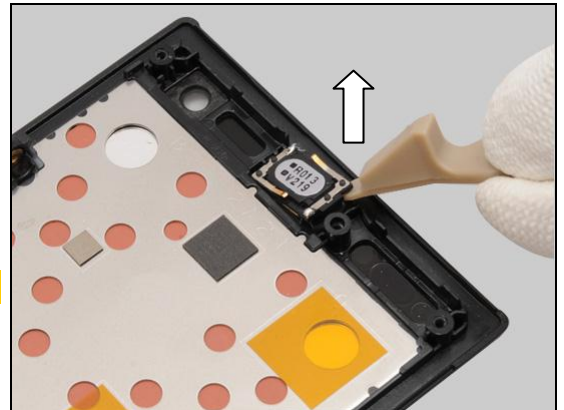
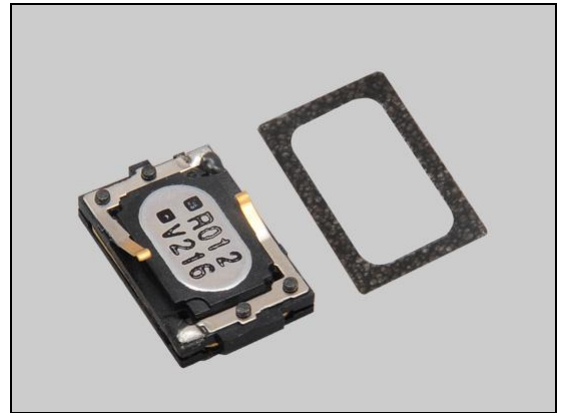
Carry out the Installation as described below.

*Follow the 5.5 – 5.10 Reassembly instructions!*

#### REMOVAL

Detach to remove the Ear Speaker by using a Front Opening Tool.

**Scrap! Not to be reused!**

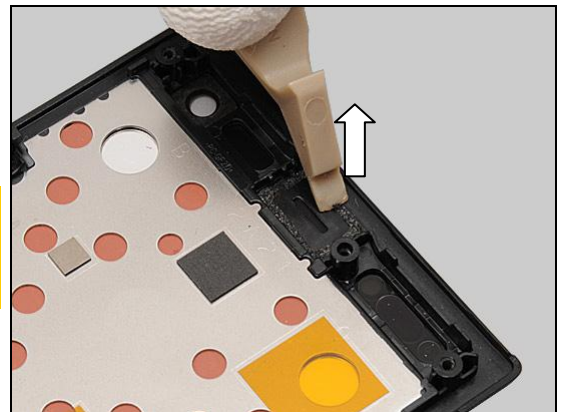


Detach to remove the Foil Adhesive WP Receiver by using a Front Opening Tool.

**Scrap! Not to be reused!**

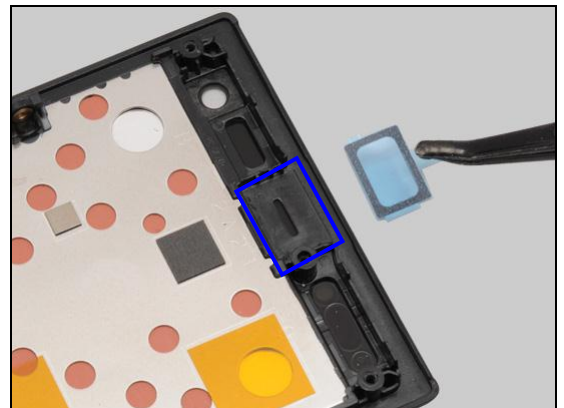
**Make sure all remains have been removed!**

**Do not scratch the plastic surface!**



#### INSTALLATION

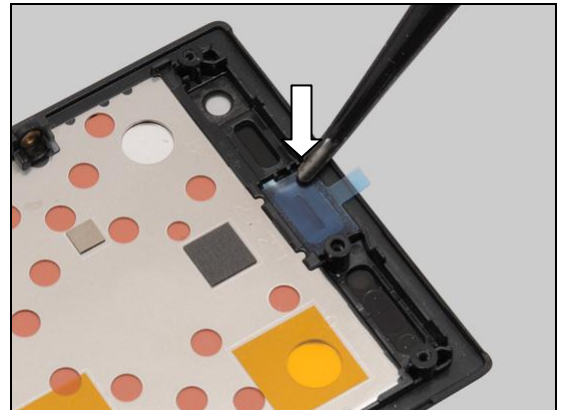
Place a new Foil Adhesive WP Receiver in the cavity.



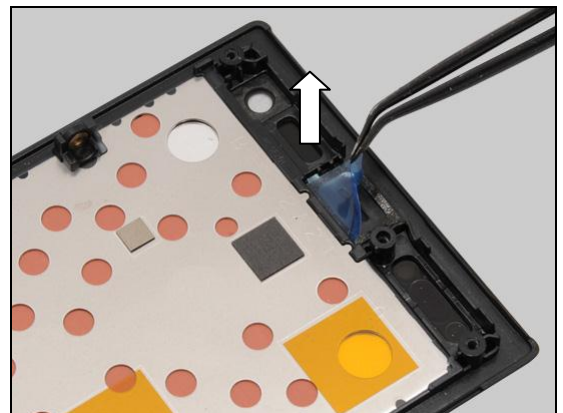


## Replacement: Ear Speaker and Foil Adhesive WP Receiver

Press along to secure its attachment.

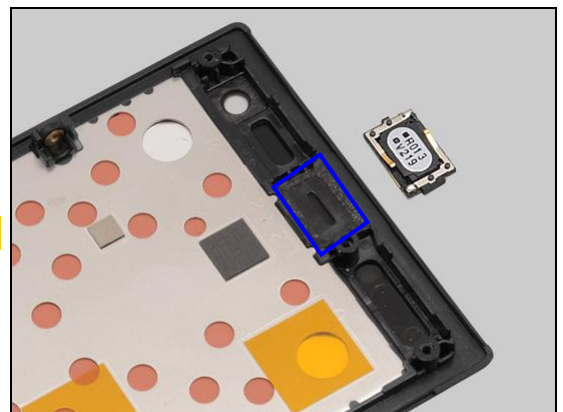


Gently peel off the protective film.

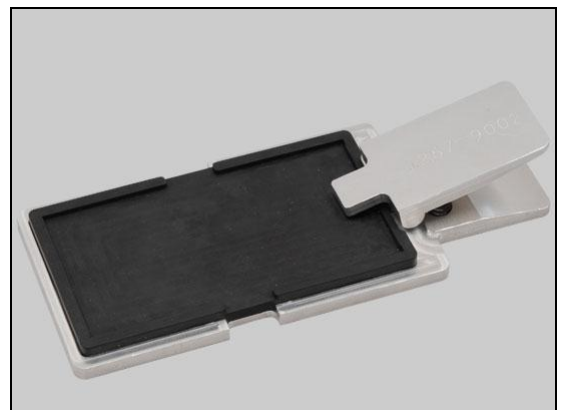


Place a new Ear Speaker in the cavity.

**Note the orientation of the Ear Speaker to be installed!**



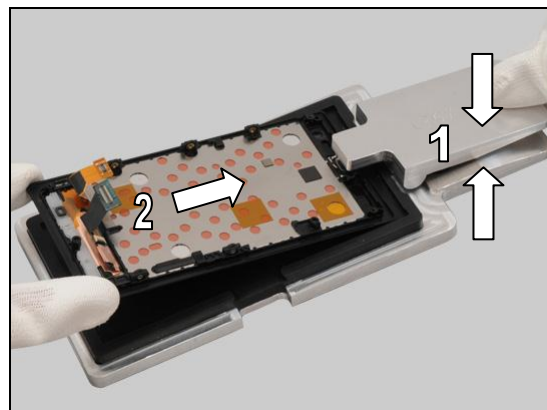
Prepare the Press Tool Earspeaker.





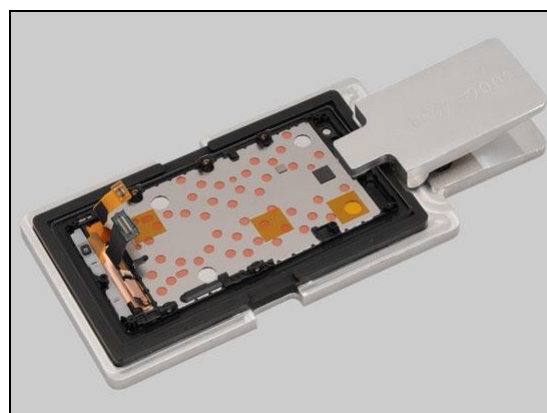
## Replacement: Ear Speaker and Foil Adhesive WP Receiver

Hold the clip and insert the Touch/Display Front Cover Assy into the cavity.

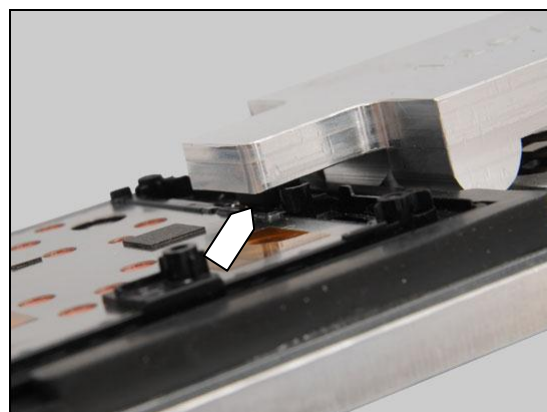


Loosen the clip to press the Ear Speaker for  $5 \pm 1$  seconds.

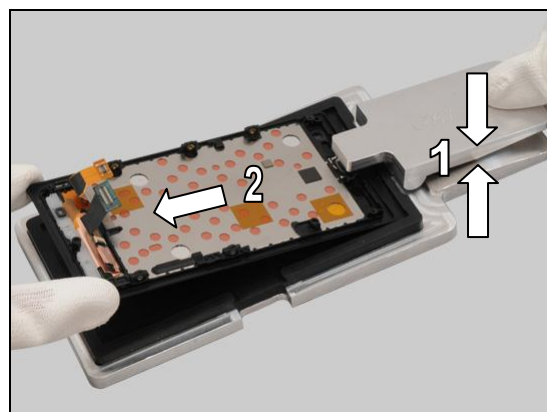
**Do not press the clip!**



The rubber of the tool presses the Ear Speaker when pressing as shown.



Press the clip and remove the Touch/Display Front Cover Assy.



## Replacement

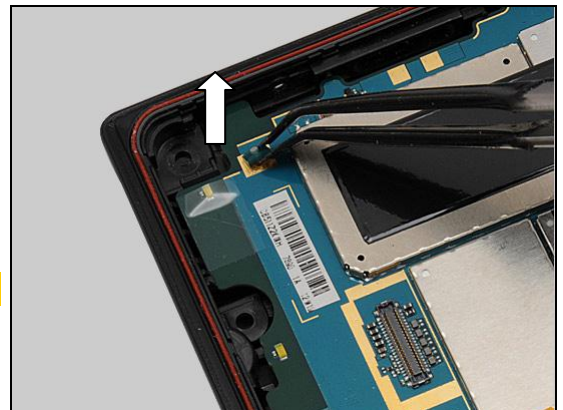
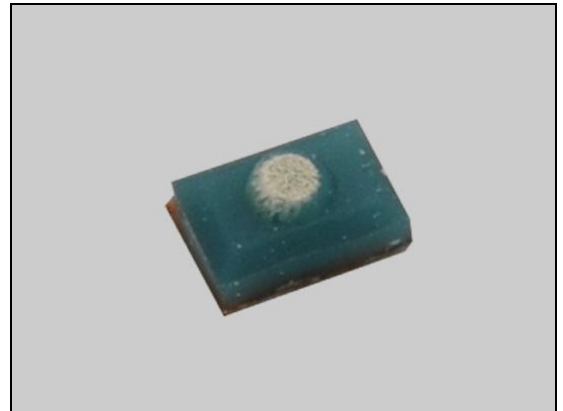
### 4.23 Gasket Dot Connector

*Follow the 3.1 – 3.6 Disassembly instructions!*  
 Carry out the Removal as described below.  
 Prepare a new Gasket Dot Connector.  
 Carry out the Installation as described below.  
*Follow the 5.5 – 5.10 Reassembly instructions!*

#### REMOVAL

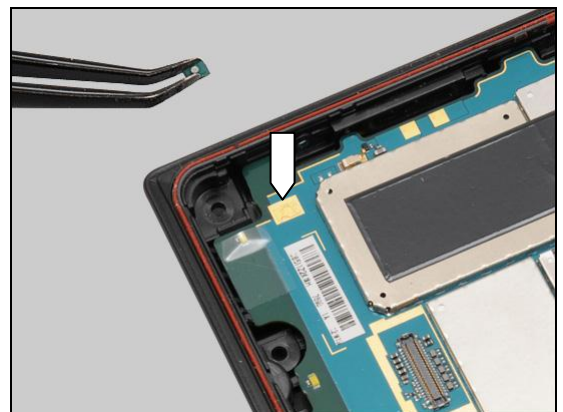
Detach to remove the Gasket Dot Connector by using a Flex Film Assembly Tool.

**Scrap! Not to be reused!**

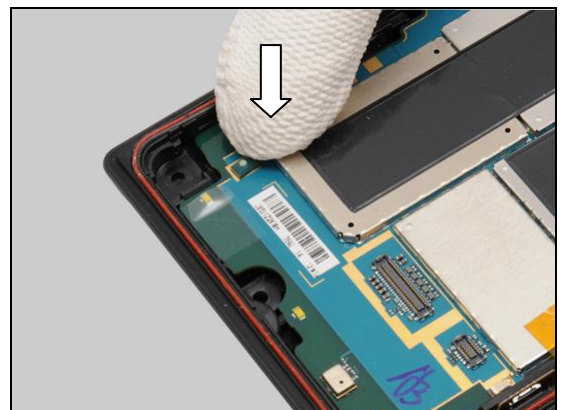


#### INSTALLATION

Place a new Gasket Dot Connector on its proper position as indicated by the golden area.



Press to secure its attachment.



## Replacement

### 4.24 Holder Camera

*Follow the 3.1 – 3.8 Disassembly instructions!*

Carry out the Removal as described below.

Prepare a new Holder Camera.

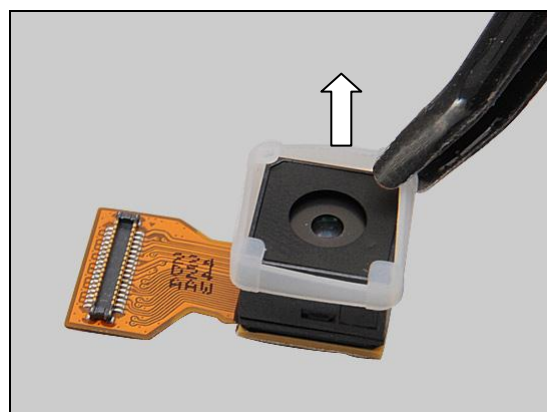
Carry out the Installation as described below.

*Follow the 5.3 – 5.10 Reassembly instructions!*

#### REMOVAL

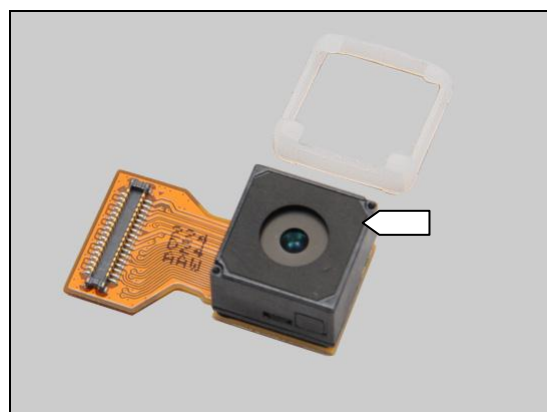
Remove the Holder Camera by using a Flex Film Assembly Tool.

**Do not touch the camera lens!**

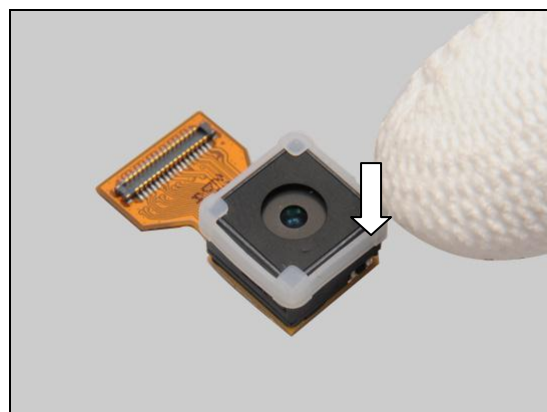


#### INSTALLATION

Place a new Holder Camera on the Camera.



Press along to secure its attachment.



## Replacement

### 4.25 Key Gasket (for Key Power & Key Camera)

*Follow the 3.1 – 3.5 Disassembly instructions!*

Carry out the Removal as described below.

Prepare a new Key Gasket.

Carry out the Installation as described below.

*Follow the 5.6 – 5.10 Reassembly instructions!*

#### REMOVAL

Detach to remove the Key Gasket by using a Flex Film Assembly Tool.

**Scrap! Not to be reused!**

**Do not damage the plastic surface!**



#### INSTALLATION

**Use an air gun to clean the hole of the Key Gasket!**

**Do not damage the sealing rubber of the Key Gasket when mounting!**

**Make sure that the Key Gasket is clean and no dirt, particles and fiber attached on it! Otherwise replace a new one.**

Place a new Key Gasket on its proper position.

Press to secure its solid attachment.

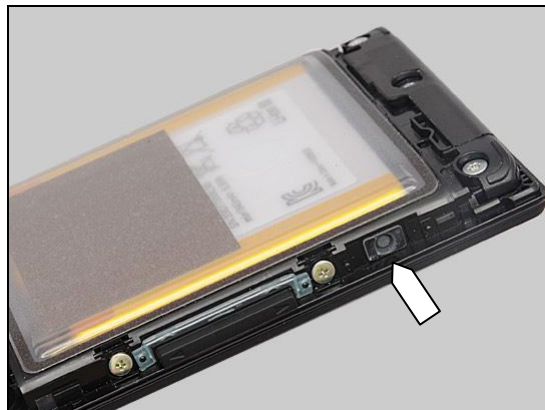
**Do not touch the central area of the Key Gasket!**

**Make sure the key gasket solid attachment onto plastic surface, no floating and no damaging!**



## Replacement: Key Gasket

Do the same to replace the Key Gasket of the Key Camera.





## Replacement

### 4.26 Key Gasket (for Key Volume)

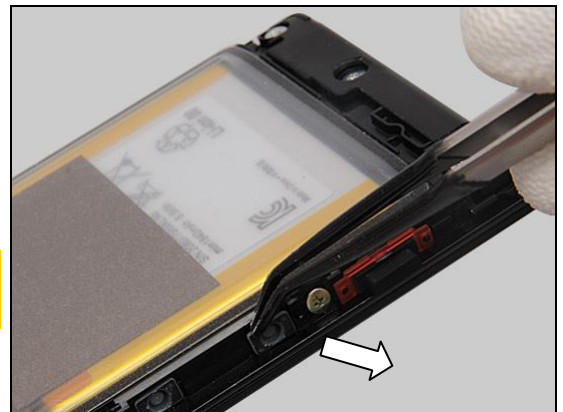
*Follow the 3.1 – 3.5 Disassembly instructions!*  
*Follow the 4.34 Removal instructions!*  
Carry out the Removal as described below.  
Prepare a new Key Gasket.  
Carry out the Installation as described below.  
*Follow the 4.34 Key Installation instructions!*  
*Follow the 5.6 – 5.10 Reassembly instructions!*

#### REMOVAL

Detach to remove the Key Gasket by using a Flex Film Assembly Tool.

**Scrap! Not to be reused!**

**Do not damage the plastic surface!**



#### INSTALLATION

**Use an air gun to clean the hole of the Key Gasket!**

**Do not damage the sealing rubber of the Key Gasket when mounting!**

**Make sure that the Key Gasket is clean and no dirt, particles and fiber attached on it! Otherwise replace a new one.**

Place a new Key Gasket on its proper position.

Press to secure its solid attachment.

**Do not touch the central area of the Key Gasket!**

**Make sure the key gasket solid attachment onto plastic surface, no floating and no damaging!**



## Replacement: Key Gasket

Do the same to replace the other one.



## Replacement

### 4.27 Label NFC

Carry out the Removal as described below.  
Prepare a new Label NFC.  
Carry out the Installation as described below.

#### REMOVAL

Gently detach to remove the Label NFC by using a Flex Film Assembly Tool.

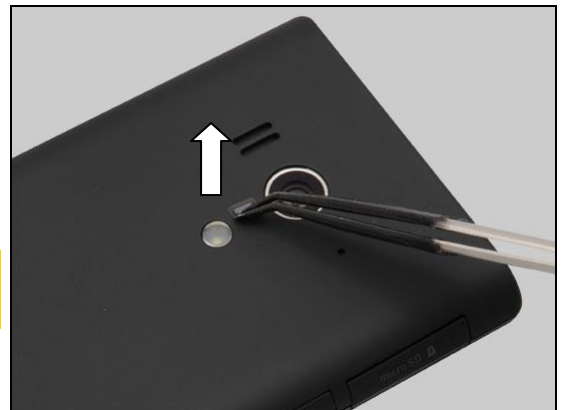
**Scrap! Not to be reused!**

**Do not damage the Cover Back!**

#### INSTALLATION

Place a new Label NFC on the correct position.

Press to secure its attachment.





## Replacement

### 4.28 Lightguide Key Sub Assy

*Follow the 3.1 – 3.6 Disassembly instructions!*  
 Carry out the Removal as described below.  
 Prepare a new Lightguide Key Sub Assy.  
 Carry out the Installation as described below.  
*Follow the 5.5 – 5.10 Reassembly instructions!*

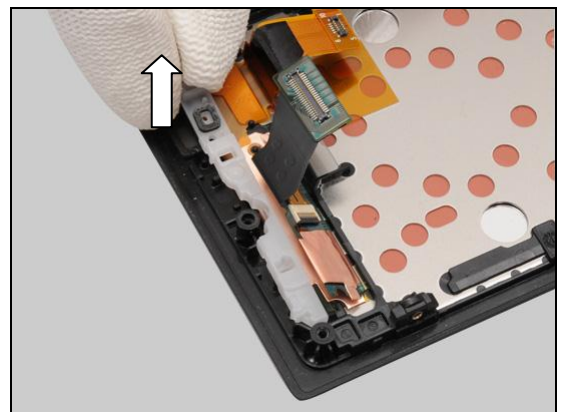
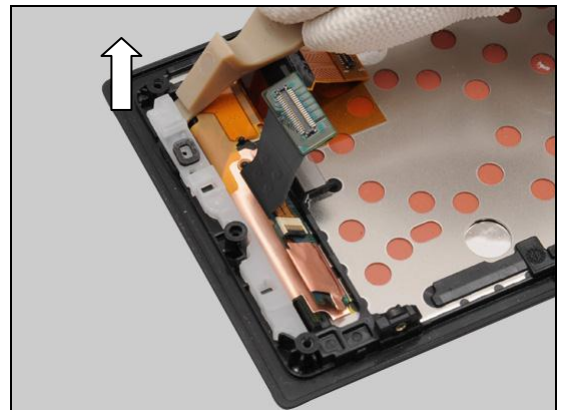
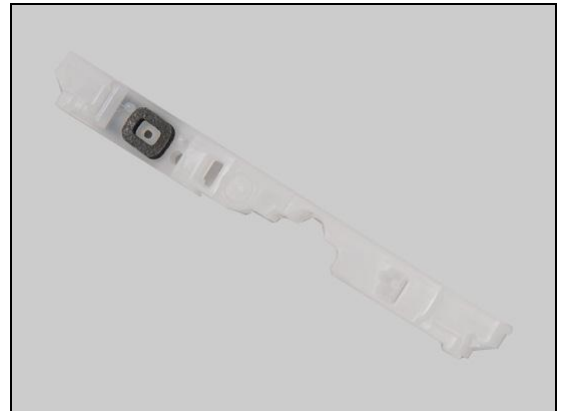
#### REMOVAL

Insert a Front Opening Tool as shown and gently Lift upwards to release the hook of the Lightguide Key Sub Assy.

Lift upwards to remove it with fingers.

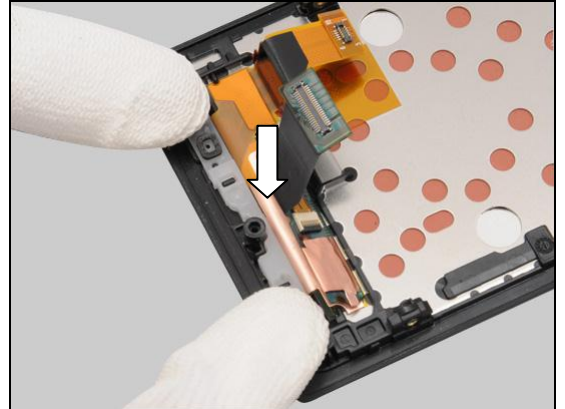
#### INSTALLATION

Place a new Lightguide Key Sub Assy in the cavity.



## Replacement: Lightguide Key Sub Assy

Press to secure its attachment.



## Replacement

### 4.29 Loudspeaker & Foil Adhesive WP Speaker

*Follow the 3.1 – 3.9 Disassembly instructions!*

Carry out the Removal as described below.

Prepare a new Loudspeaker and a new Foil Adhesive WP Speaker.

Carry out the Installation as described below.

*Follow the 5.2 – 5.10 Reassembly instructions!*

#### REMOVAL

Detach to remove the Loudspeaker by using a Front Opening Tool.

**Scrap! Not to be reused!**



Detach to remove the Foil Adhesive WP Speaker by using a Front Opening Tool.

**Scrap! Not to be reused!**

**Make sure all remains have been removed!**

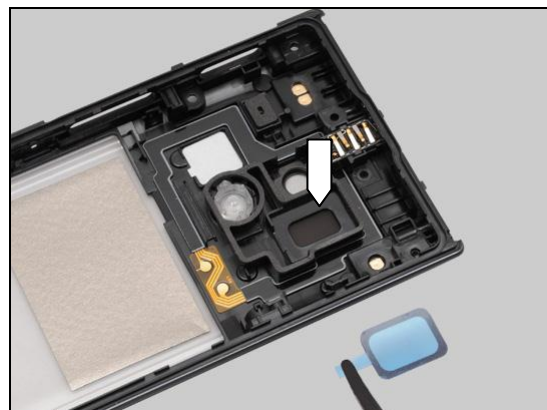
**Do not scratch the plastic surface!**

**Do not damage speaker box cushion and battery film on the Rear Cover Assy in this action!**



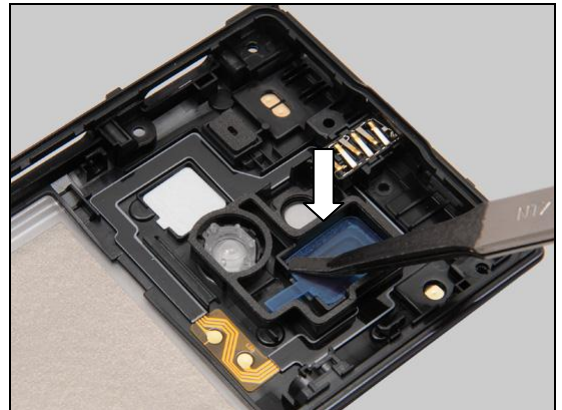
#### INSTALLATION

Place a new Foil Adhesive WP Speaker into the socket.



## Replacement: Loudspeaker & Foil Adhesive WP Speaker

Press to secure its attachment.

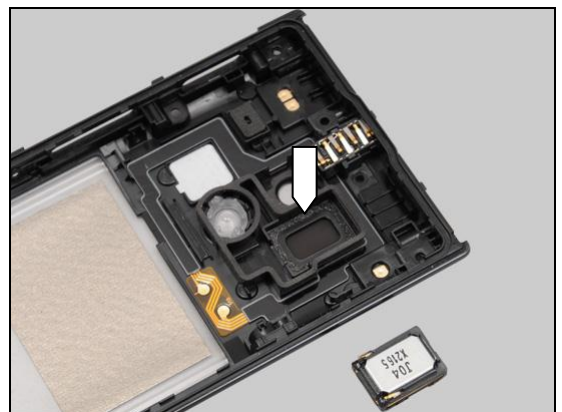


Peel off the protective film.



Place a new Loudspeaker into the cavity.

**Note the orientation of the Loudspeaker to be installed!**



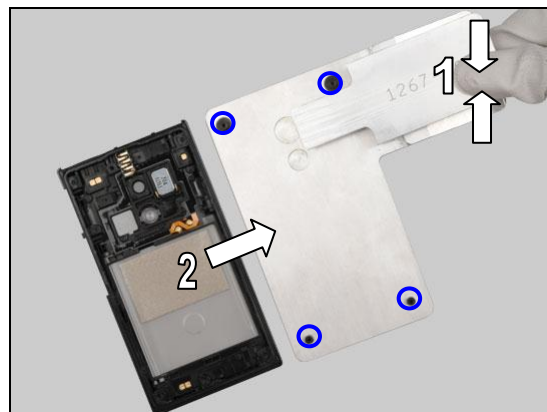
Prepare the Press Tool Loudspeaker.



## Replacement: Loudspeaker & Foil Adhesive WP Speaker

Hold the clip and locate the Rear Cover Assy by using 4 pins on the tool and 4 screw holes on the Rear Cover Assy.

**Make sure the tool is clean and not to damage the battery film!**

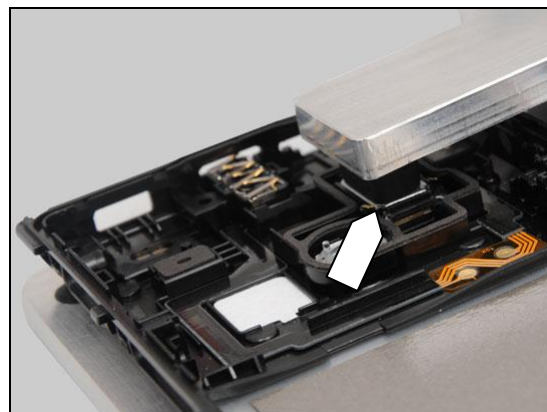


Loosen the clip to press the Loudspeaker for  $5 \pm 1$  seconds.

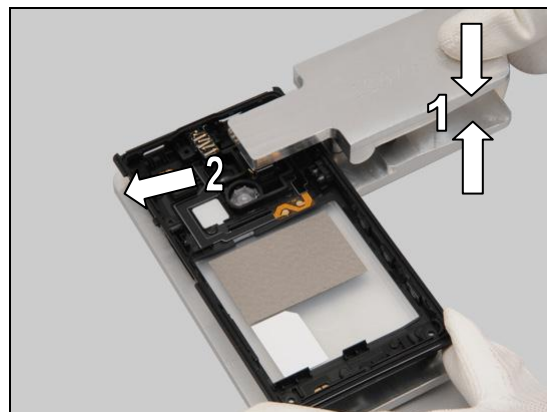
**Do not press the clip!**



The rubber of the tool presses the Loudspeaker when pressing as shown.



Press the clip and remove the Rear Cover Assy.





## Replacement

### 4.30 Net Speaker

*Follow the 3.2 – 3.4 Disassembly instructions!*

Carry out the Removal as described below.

Prepare a new Net Speaker.

Carry out the Installation as described below.

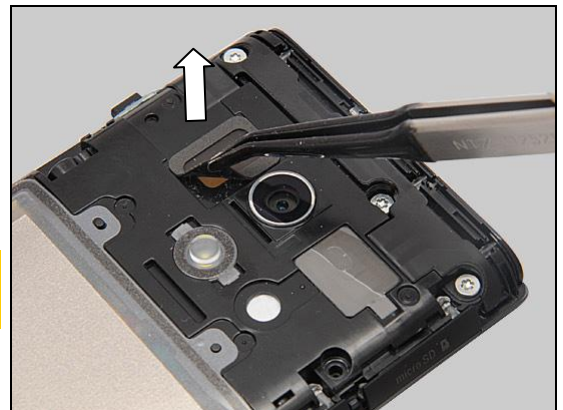
*Follow the 5.7 – 5.9 Reassembly instructions!*

#### REMOVAL

Detach to remove the Net Speaker by using a Flex Film Assembly Tool.

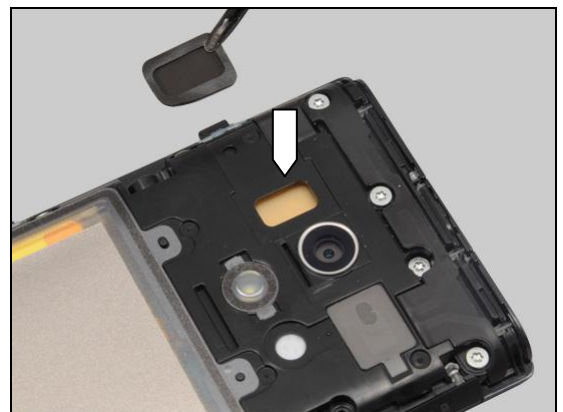
**Scrap! Not to be reused!**

**Make sure that all remains have been removed!**



#### INSTALLATION

Place a new Net Speaker on its proper position.



Press along to secure its position.



## Replacement

### 4.31 Sheet Key FPC (on the PBA Flex Module)

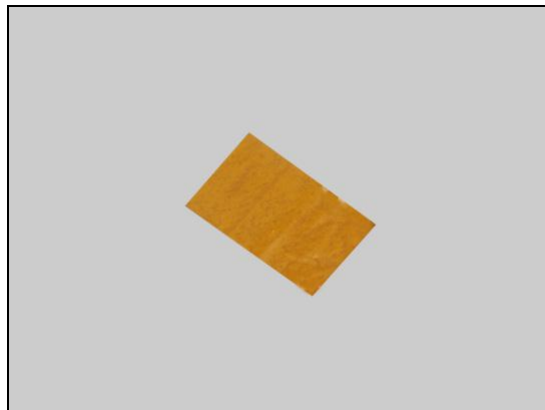
*Follow the 3.1 – 3.10 Disassembly instructions!*

Carry out the Removal as described below.

Prepare a new Sheet Key FPC.

Carry out the Installation as described below.

*Follow the 5.1 – 5.10 Reassembly instructions!*



## Replacement

### 4.32 Sheet Key FPC (on board)

*Follow the 3.1 – 3.6 Disassembly instructions!*

Carry out the Removal as described below.

Prepare a new Sheet Key FPC.

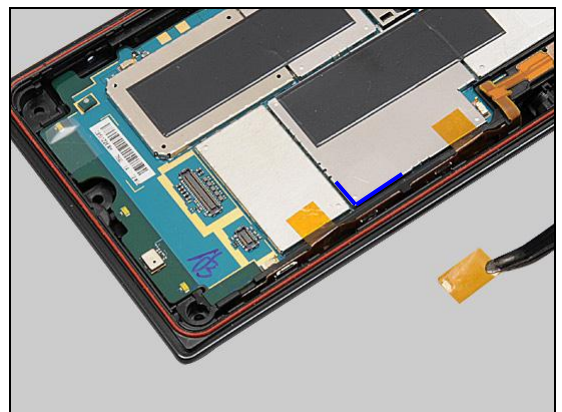
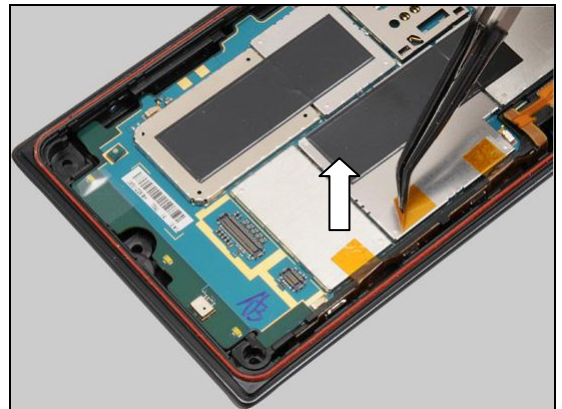
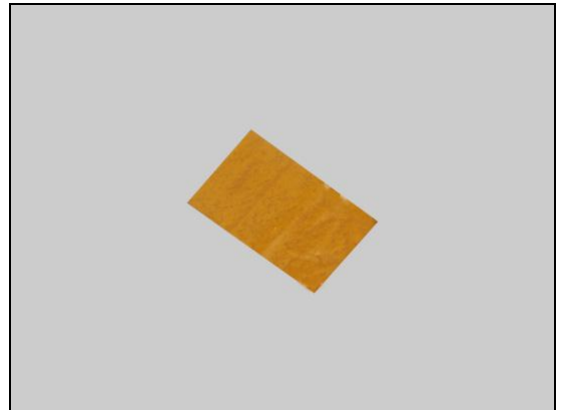
Carry out the Installation as described below.

*Follow the 5.5 – 5.10 Reassembly instructions!*

#### REMOVAL

Gently peel off the Sheet Key FPC by using a Flex Film Assembly Tool.

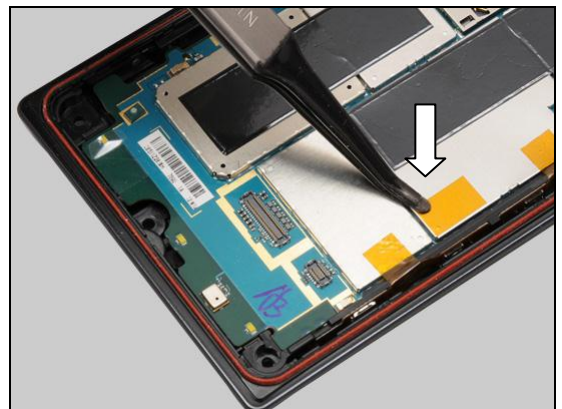
**Scrap! Not to be reused!**



#### INSTALLATION

Place a new Sheet Key FPC on the PBA as indicated by the blue lines.

Press along to secure its attachment.



## Replacement

### 4.33 Sheet LED

*Follow the 3.1 – 3.6 Disassembly instructions!*

Carry out the Removal as described below.

Prepare a new Sheet LED.

Carry out the Installation as described below.

*Follow the 5.5 – 5.10 Reassembly instructions!*

#### REMOVAL

Gently peel off the Sheet LED by using a Flex Film Assembly Tool.

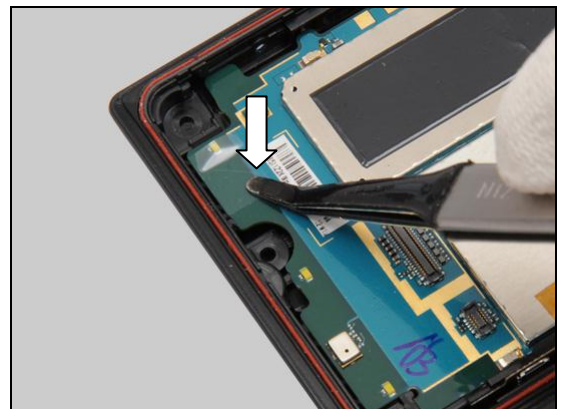
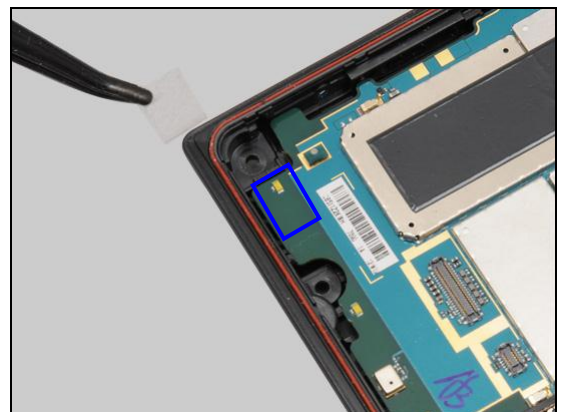
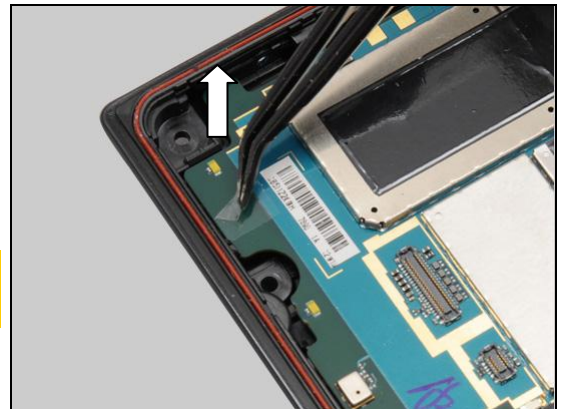
**Scrap! Not to be reused!**

**Do not damage the LED!**

#### INSTALLATION

Place a new Sheet LED aligning by the blue rectangle.

Press along to secure its attachment.



## Replacement

### 4.34 Sheet Volume Key

*Follow the 3.2 – 3.5 Disassembly instructions!*

Carry out the Removal as described below.

Prepare a new Sheet Volume Key.

Carry out the Installation as described below.

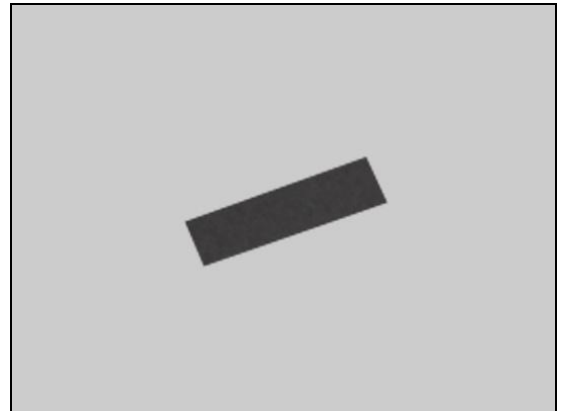
*Follow the 5.6 – 5.9 Reassembly instructions!*

#### REMOVAL

Gently peel off the Sheet Volume Key by using a Flex Film Assembly Tool.

**Scrap! Not to be reused!**

**Do not damage the Key Gasket!**



#### INSTALLATION

Place a new Sheet Volume Key aligning by the blue rectangle.



Press along to secure its attachment.





## Replacement

### 4.35 Vibrator

*Follow the 3.1 – 3.10 Disassembly instructions!*

Carry out the Removal as described below.

Prepare a new Vibrator.

Carry out the Installation as described below.

*Follow the 5.1 – 5.10 Reassembly instructions!*

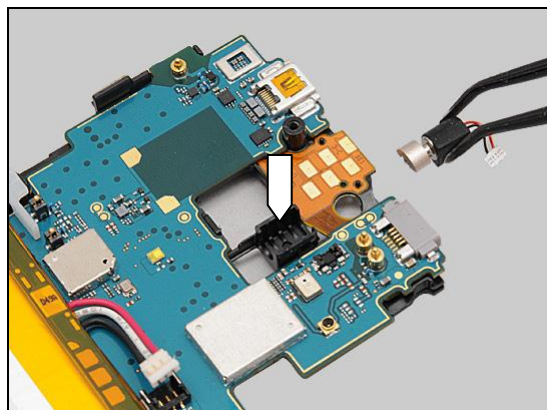
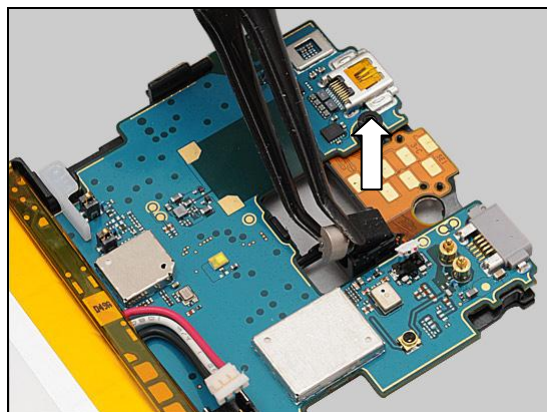
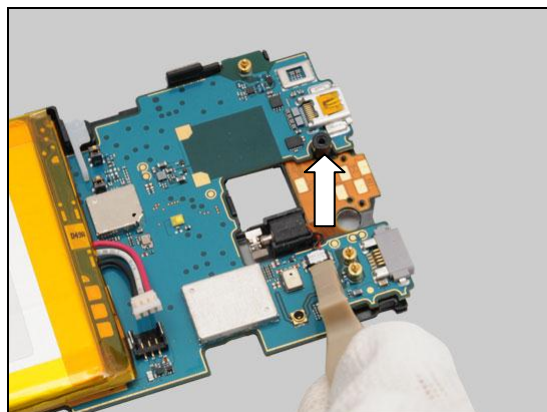
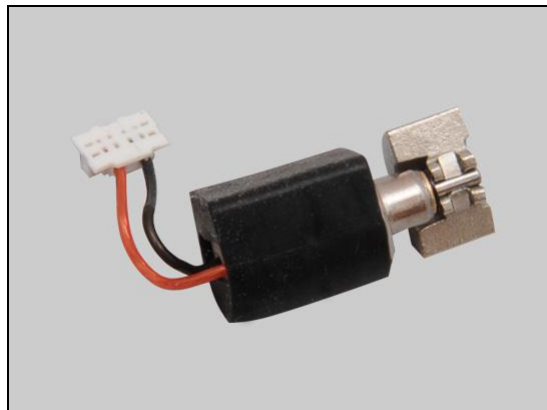
#### REMOVAL

Disconnect the connector of the Vibrator.

Remove it.

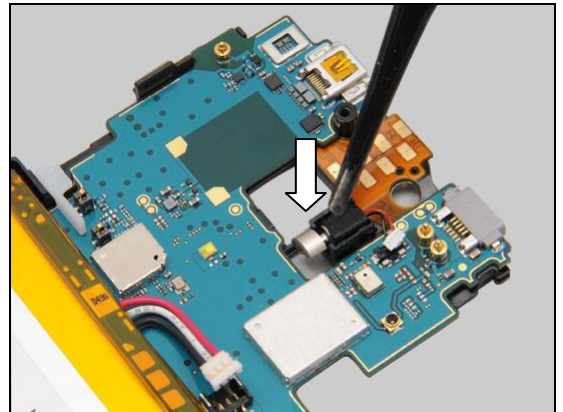
#### INSTALLATION

Place a new Vibrator in the socket.

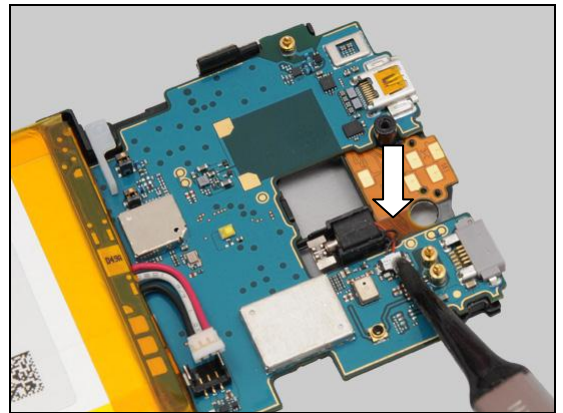


## Replacement: Vibrator

Press it to the bottom of the socket.



Snap the connector.



## Replacement

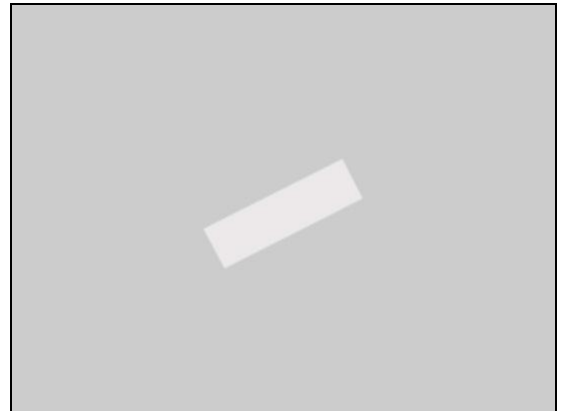
### 4.36 Water Indicator

Carry out the Removal as described below.  
Prepare a new Water Indicator.  
Carry out the Installation as described below.

#### REMOVAL

Pull upwards to release the Cap Micro SD with fingers.

**Do not touch the sealing rubber of the Cap Micro SD!**  
**Make sure that the Cap Micro SD is clean, no dirt, particles and fiber attached on it!**



Detach to remove the Water Indicator as shown.

**Scrap! Not to be reused!**



#### INSTALLATION

Attach a new Water Indicator on the correct position as shown and press to secure its attachment.



## Replacement: Water Indicator

**Use an air gun to clean the Cap Micro SD and its hole!  
Do not touch the sealing rubber of the Cap Micro SD!  
Make sure that the Cap Micro SD is clean and no dirt,  
particles and fiber attached on it! Otherwise replace a  
new one.**

Turn it over.



Press to snap the Cap Micro SD.



Do the same to the other Water Indicator.



## Replacement

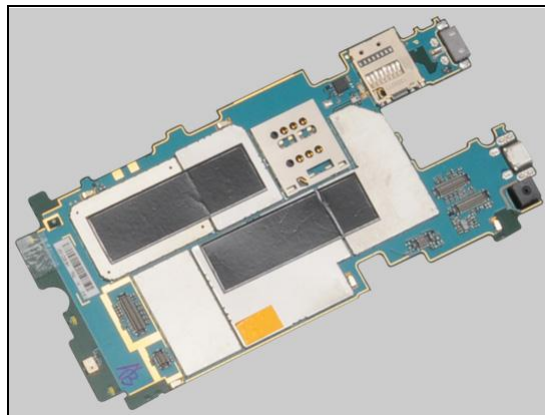
### 4.37 Board Swap - Replacement

*Follow the 3.1 – 3.10 Disassembly instructions!*

Replace the Swap Board.

*Follow the 4.21 Installation instructions!*

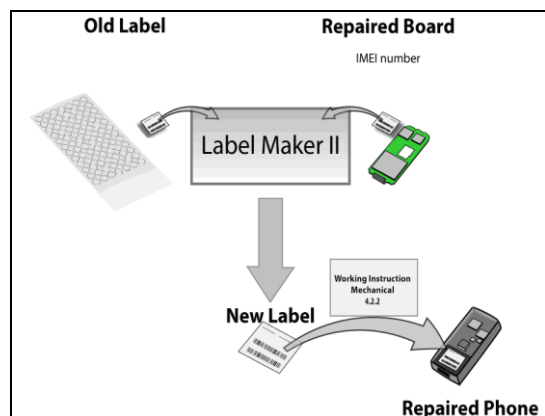
*Follow the 5.1 – 5.10 Reassembly instructions!*



### 4.38 Board Swap – Change Label

#### CHANGE LABEL

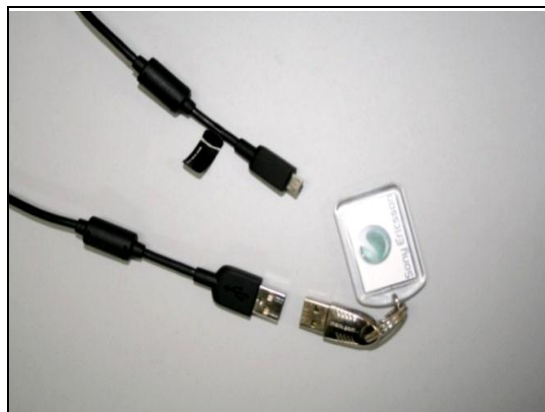
Follow the instructions in the Generic Repair Manual – Build swap for change of label.



### 4.39 Board Swap – Customize of Software

#### CUSTOMIZE OF SOFTWARE

Follow the instructions in the Generic Repair Manual – Build swap for customization of the software.

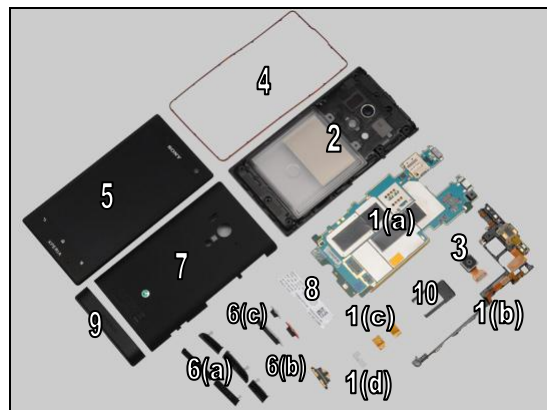




## 5 Reassembly

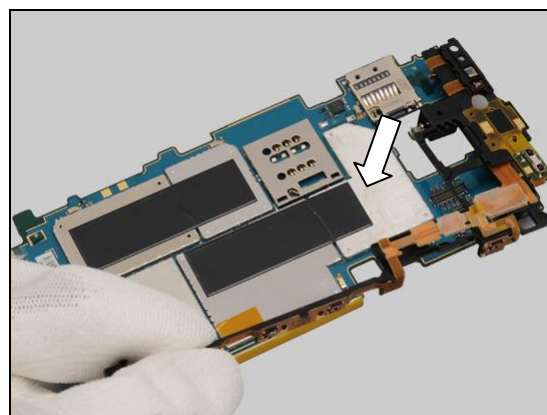
The reassembly is done in the following order:

1. PBA (a) & PBA Flex Module (b) & Sheet Key FPC (c) & Spacer Felica (d)
2. Rear Cover Assy
3. Camera with the holder
4. Gasket Main
5. Touch/Display Front Cover Assy
6. Caps (a) & Charger PAD connector (b) & Keys (c)
7. Cover Back
8. Core Unit Label
9. Cover Bottom
10. SIM Connector

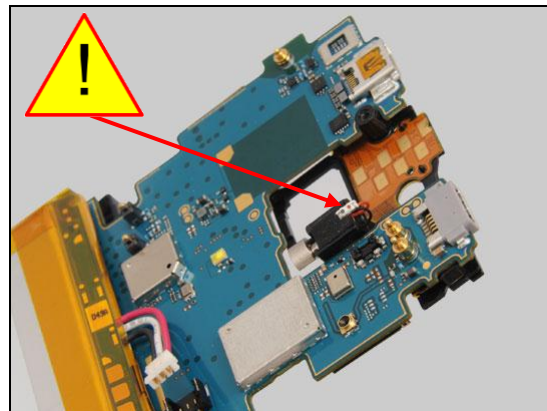


### 5.1 PBA & PBA Flex Module & Sheet Key FPC & Spacer Felica

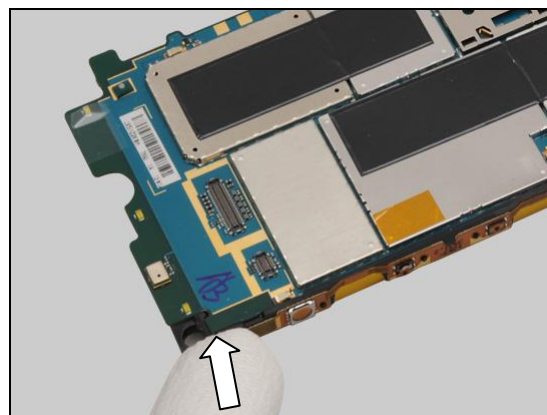
Place the PBA Flex Module onto the PBA as shown in picture.



***Make sure the Vibrator connector is NOT between the PBA Flex Module and the PBA!***

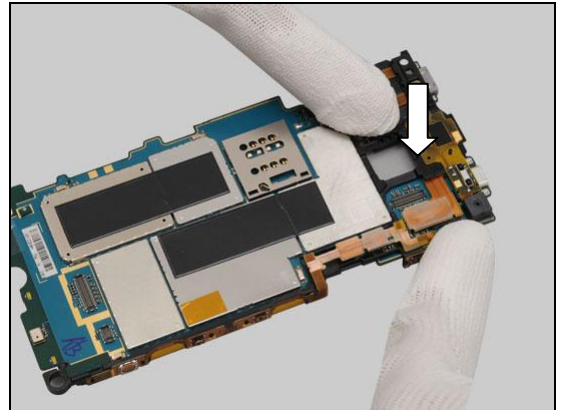


Press to secure its position of this side.

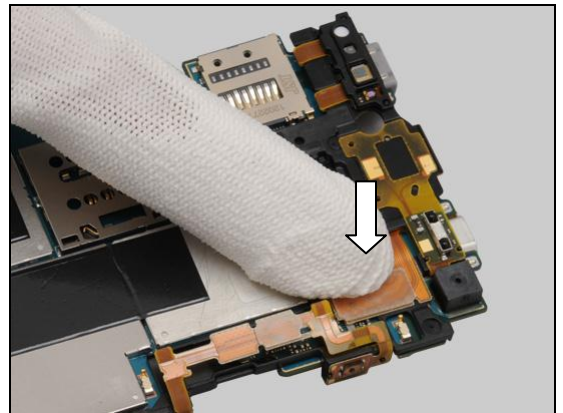


## Reassembly

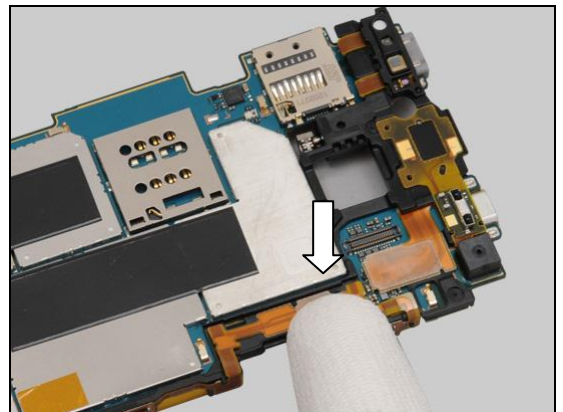
Press to secure its position.



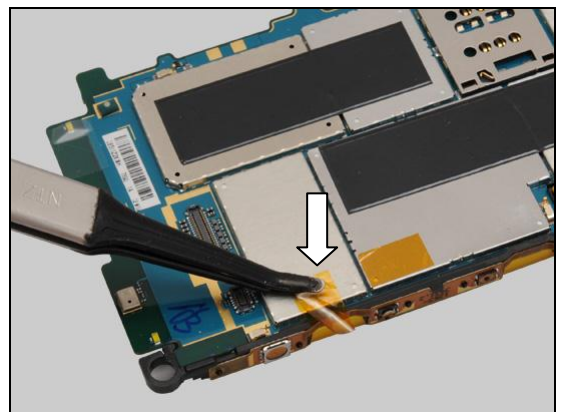
Press to snap the BtB connector.



Press to snap the other BtB connector.

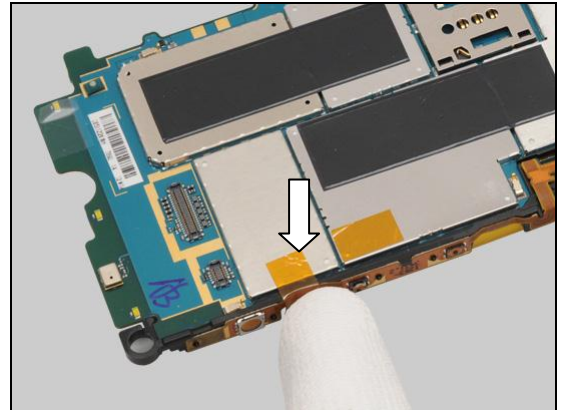


Attach a new Sheet Key FPC on its proper position as shown.

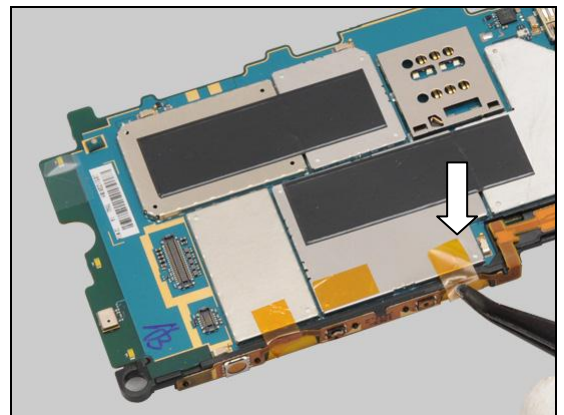


## Reassembly

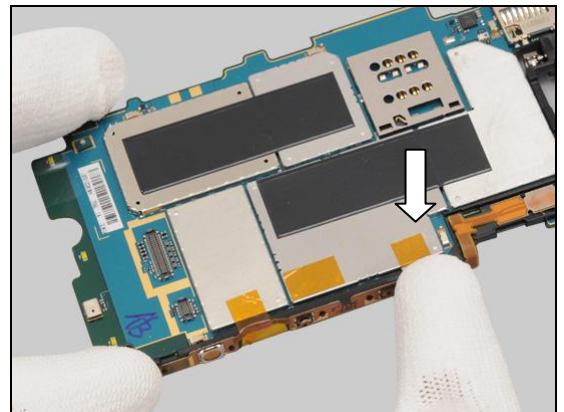
Press to secure its attachment and position.



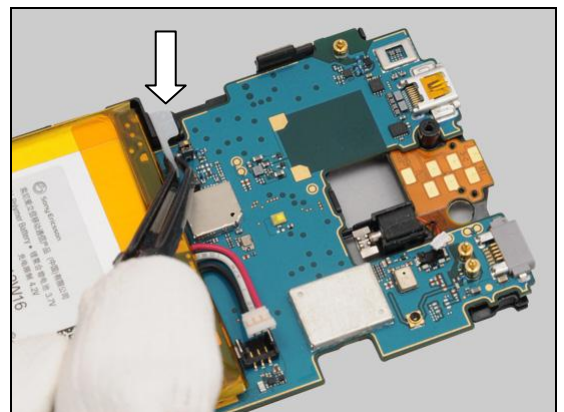
Do the same to attach a new Sheet Key FPC on its proper position as shown in picture.



Press to secure its attachment and position.



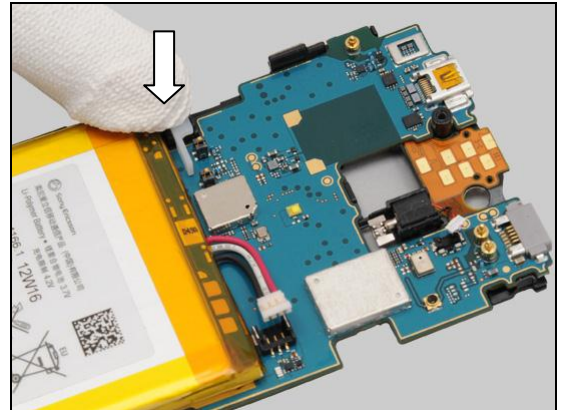
Turn the PBA over and gently insert the Spacer Felica in the cavity.



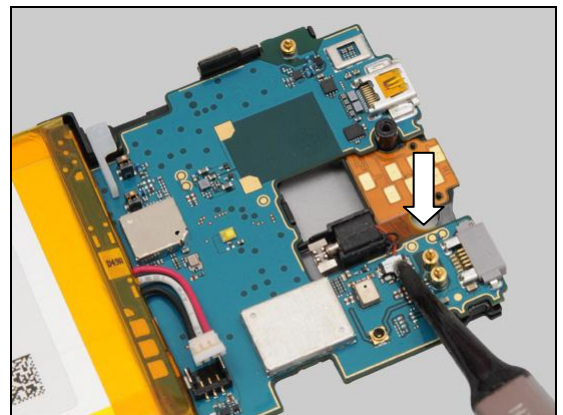


## Reassembly

Press to secure its position.



Press to snap the BtB connector of Vibrator.

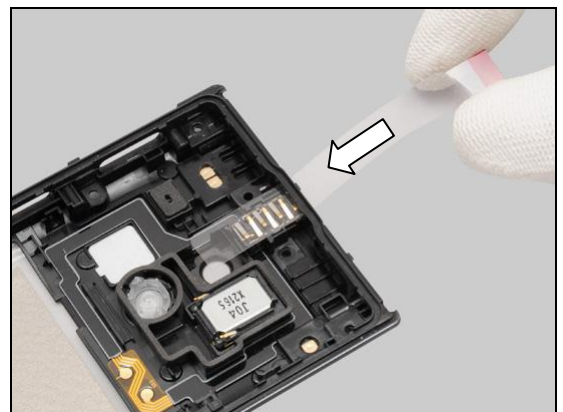


Press to snap the BtB connector of Battery.



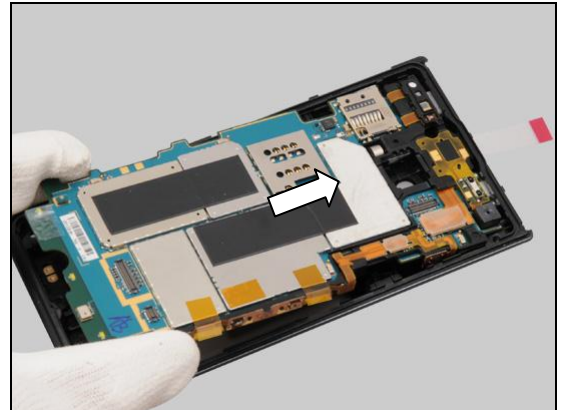
## 5.2 Rear Cover Assy

Prepare the Rear Cover Assy and insert a film into the hole as shown to protect Audio Jack pins.

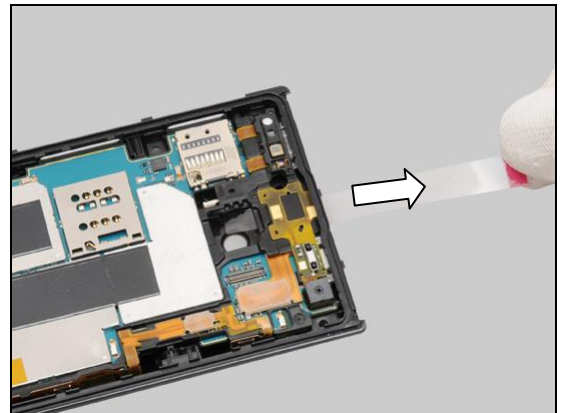


## Reassembly

Securely place the PBA onto the Rear Cover Assy.

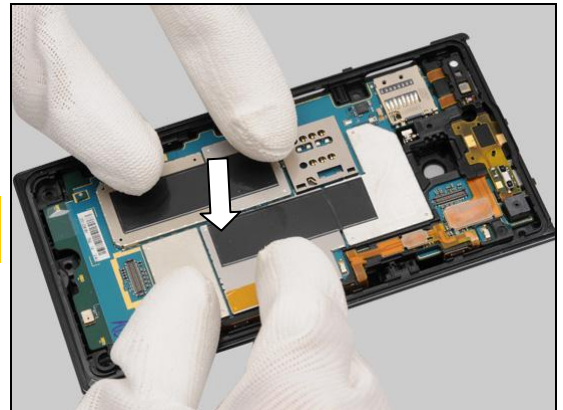


Gently pull out the film.



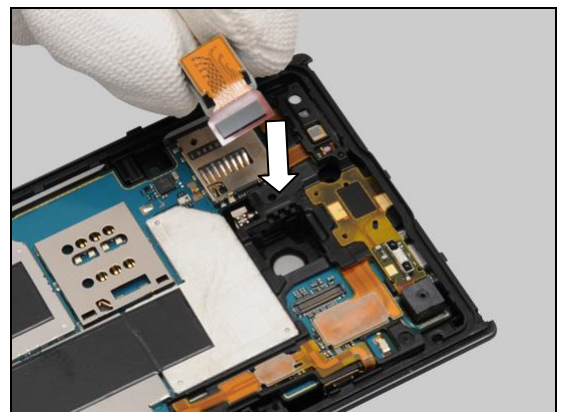
Press to snap the hooks of the PBA.

***Make sure the desk is clean and flat in order to protect battery film!***



### 5.3 Camera with the holder

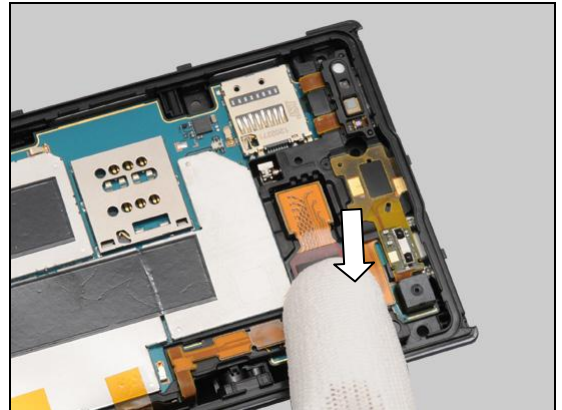
Securely place the Camera in the cavity as shown in picture.



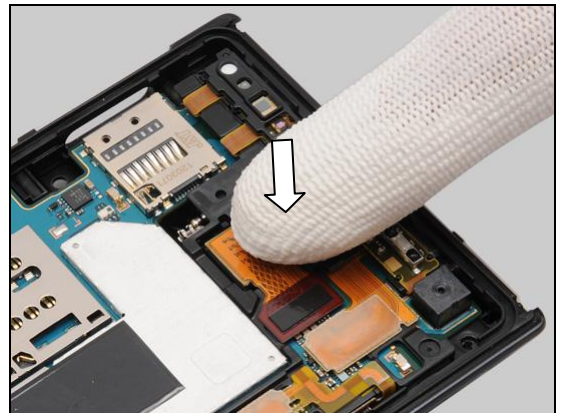


## Reassembly

Press to snap the BtB connector.



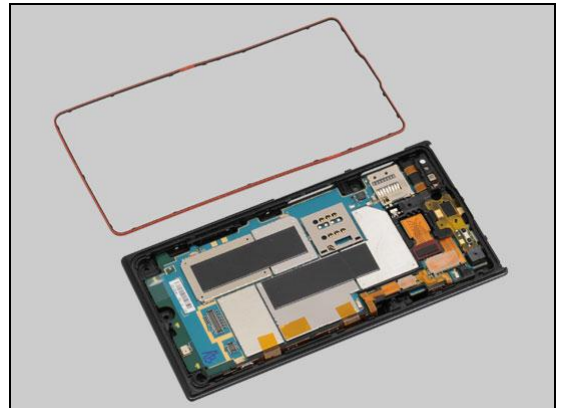
Press this side to secure its position.



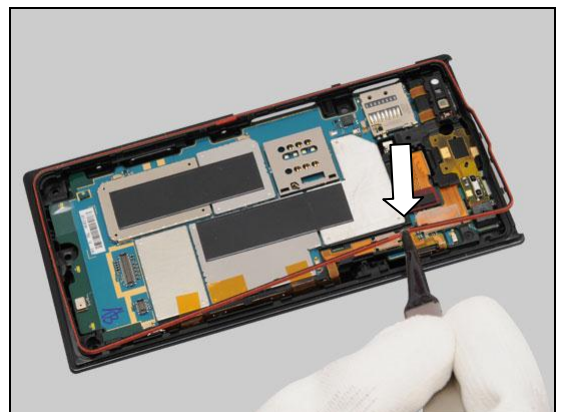
### 5.4 Gasket Main

Prepare the Gasket Main.

**Use an air gun to clean the Gasket Main and its cavity!**  
**Make sure that the Gasket Main is clean and no dirt, particles and fiber attached on it! Otherwise replace a new one.**

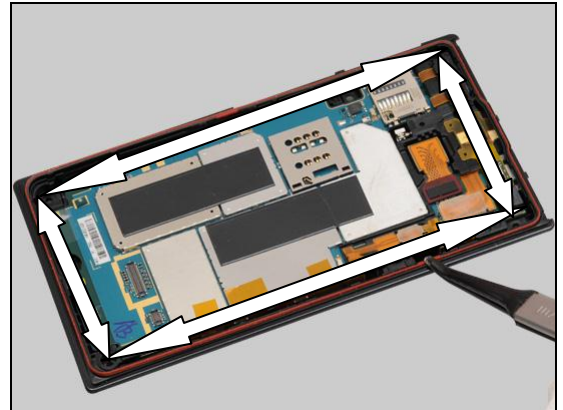


Securely place the Gasket Main in the cavity as shown in picture.



## Reassembly

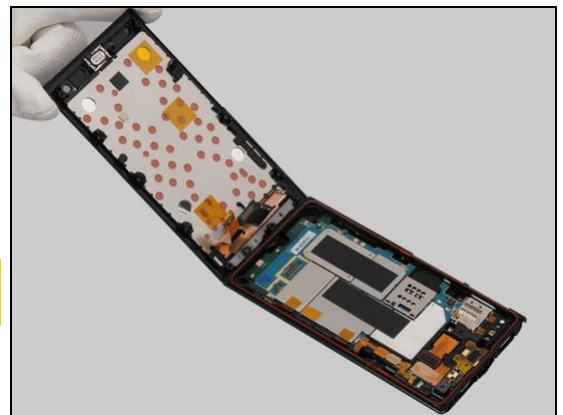
Gently press along to secure its in cavity.



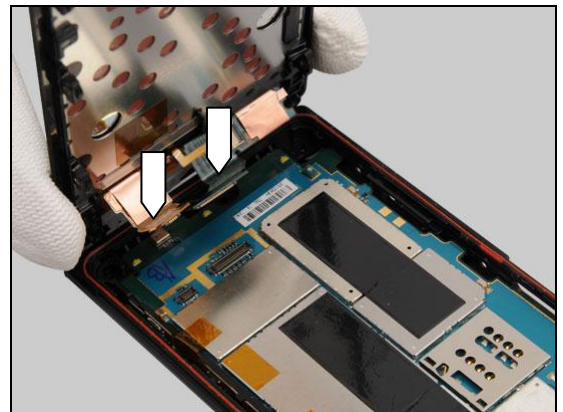
### 5.5 Touch/Display Front Cover Assy

Prepare the Touch/Display Front Cover Assy.

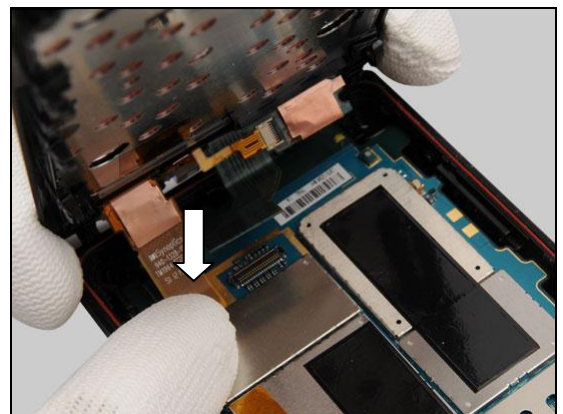
**Use an air gun to clean the Gasket Main cavity on the Touch/Display Front Cover Assy!**



There are two BtB connectors.

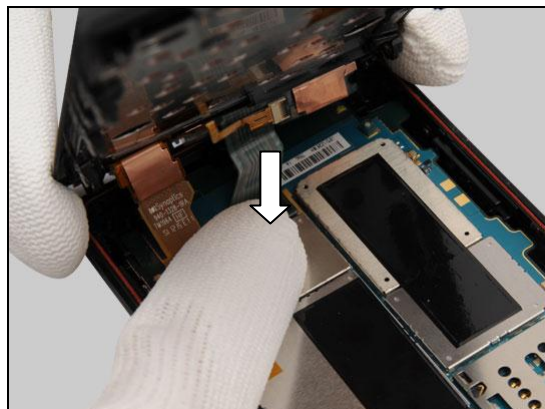


Press to snap the BtB connector with a finger.



## Reassembly

Do the same to snap the other BtB connector.



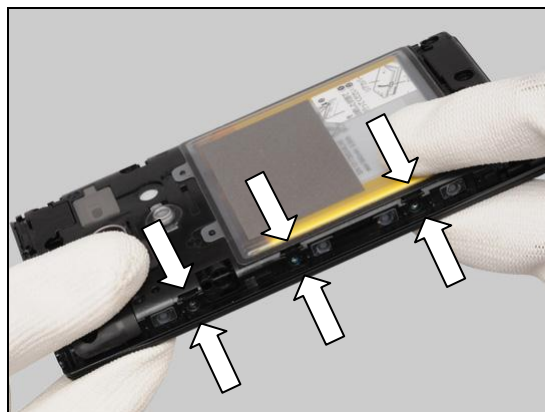
Securely place the Touch/Display Front Cover Assy on its proper position as shown in picture.



Press to snap the hooks.

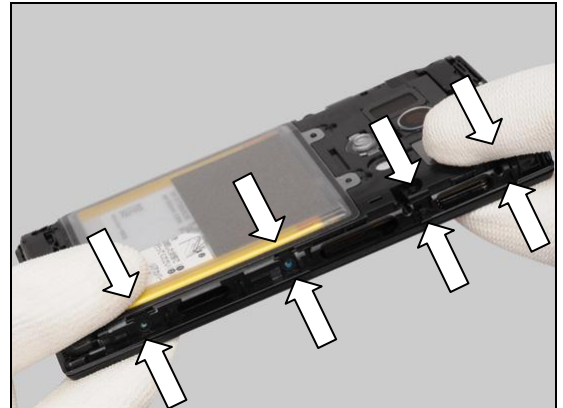


Turn the phone over and press to snap the hooks on this side.

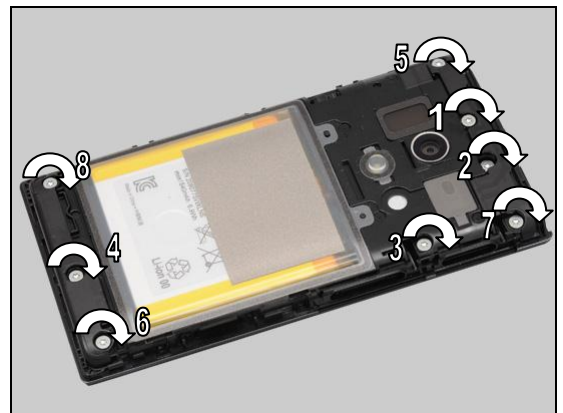


## Reassembly

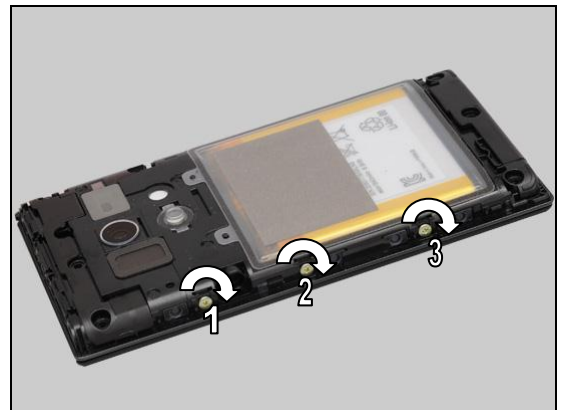
Do the same on the opposite side.



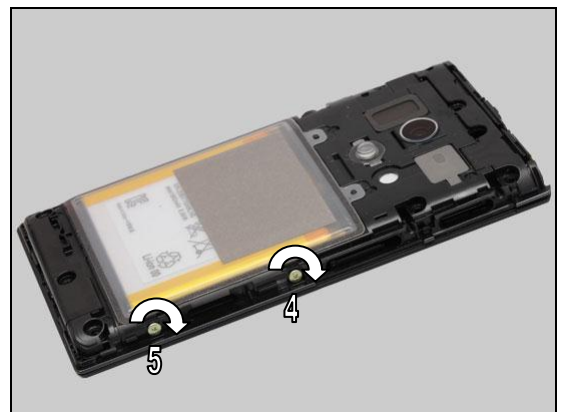
Apply  $23\text{Ncm} \pm 2\text{Ncm}$  torque when tightening these eight screws with Bits (T6) according to the sequence of 1 to 8.



Apply  $12\text{Ncm} \pm 1\text{Ncm}$  torque when tightening these three screws with Bits (JCIS No 0) according to the sequence of 1 to 3.



Apply  $12\text{Ncm} \pm 1\text{Ncm}$  torque when tightening these two screws with Bits (JCIS No 0) according to the sequence of 4 to 5.



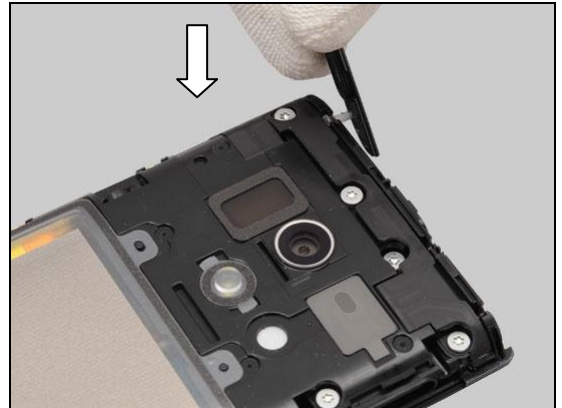


## Reassembly

### 5.6 Caps & Charger PAD connector & Keys

**Use an air gun to clean the Cap HDMI and its hole!**  
**Do not touch the sealing rubber of the Cap HDMI!**  
**Make sure that the Cap HDMI is clean and no dirt, particles and fiber attached on it! Otherwise replace a new one.**

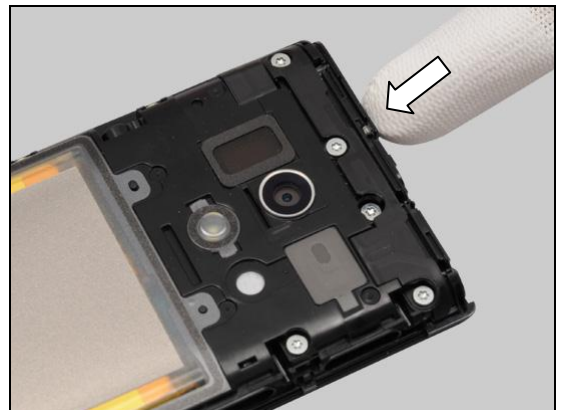
Gently insert the plug of the Cap HDMI into the socket with fingers as shown in picture.



Turn it over.

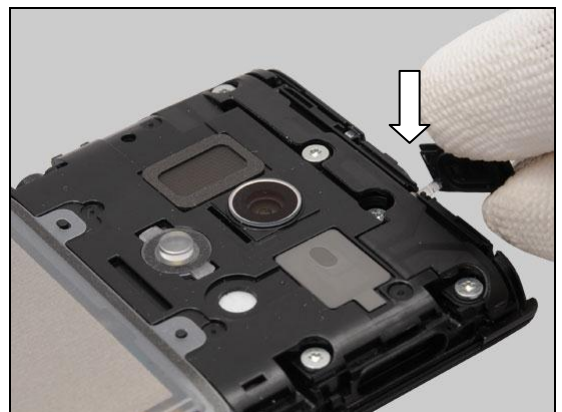


Press to secure its position.



**Use an air gun to clean the Cap Audio Jack and its hole!**  
**Do not touch the sealing rubber of the Cap Audio Jack!**  
**Make sure that the Cap Audio Jack is clean and no dirt, particles and fiber attached on it! Otherwise replace a new one.**

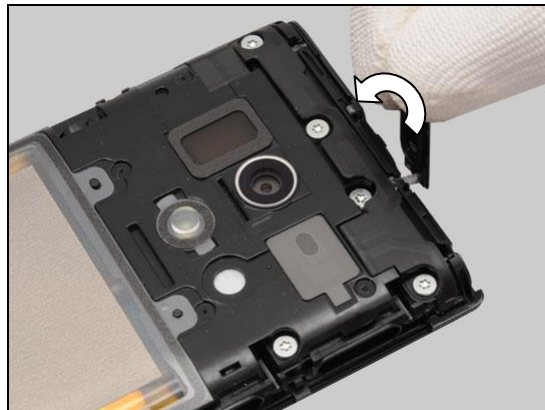
Gently insert the plug of the Cap Audio Jack into the socket with fingers as shown in picture.



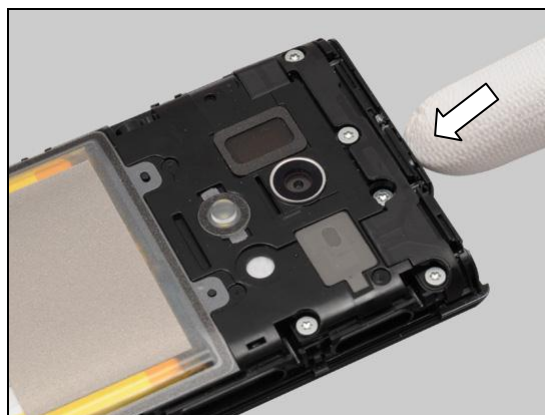


## Reassembly

Turn it over.

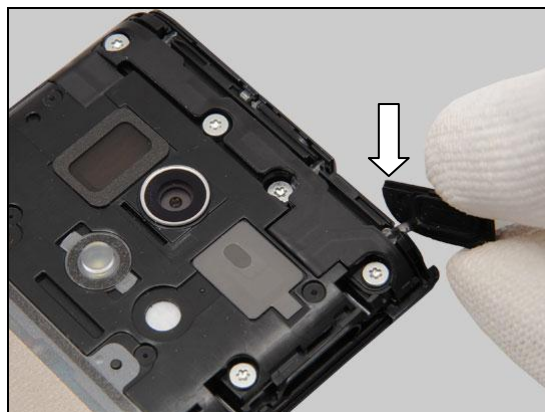


Press to secure its position.

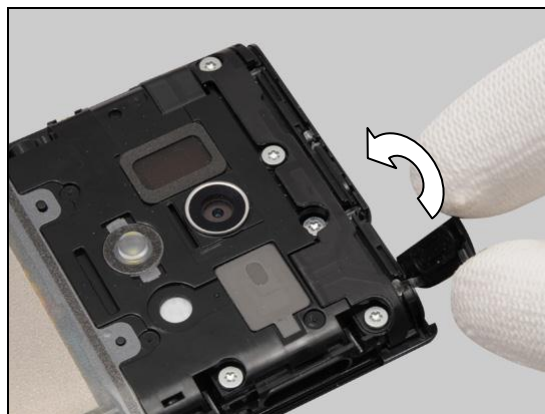


**Use an air gun to clean the Cap Micro USB and its hole!  
Do not touch the sealing rubber of the Cap Micro USB!  
Make sure that the Cap Micro USB is clean and no dirt,  
particles and fiber attached on it! Otherwise replace a  
new one.**

Gently insert the plug of the Cap Micro USB into the socket with fingers as shown in picture.

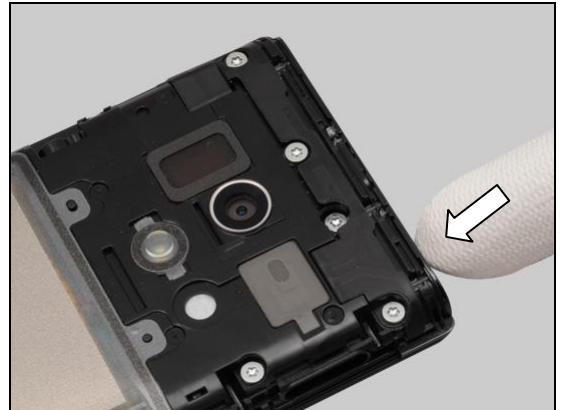


Turn it over.

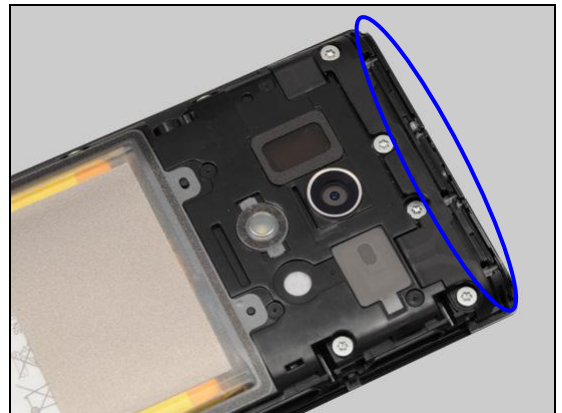


## Reassembly

Press to secure its position.

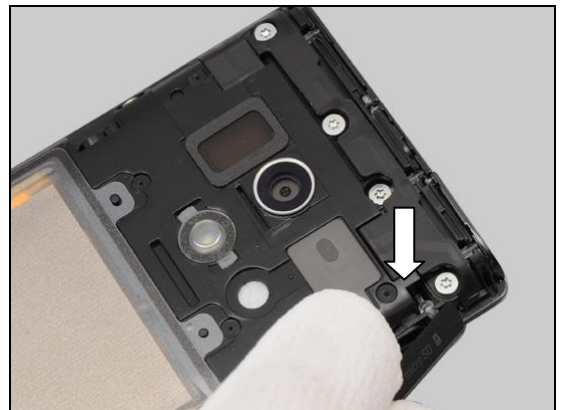


**Check that if the Caps are securely installed as shown in picture!**

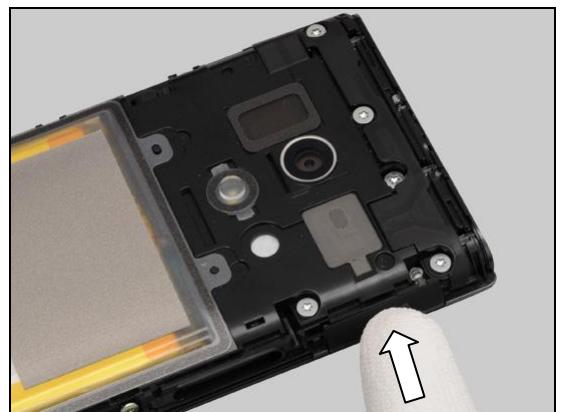


**Use an air gun to clean the Cap Micro SD and its hole!  
Do not touch the sealing rubber of the Cap Micro SD!  
Make sure that the Cap Micro SD is clean and no dirt, particles and fiber attached on it! Otherwise replace a new one.**

Gently insert the plug of the Cap Micro SD into the socket with fingers as shown in picture.



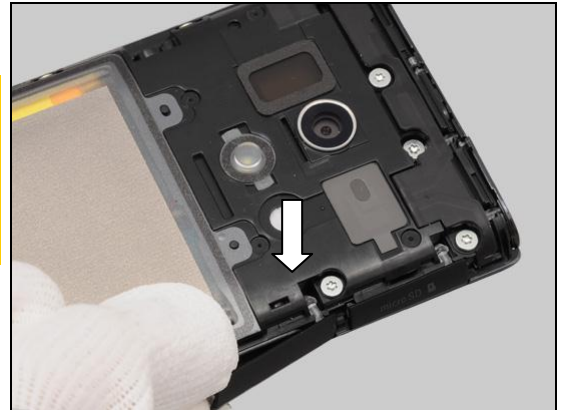
Press to secure its position.



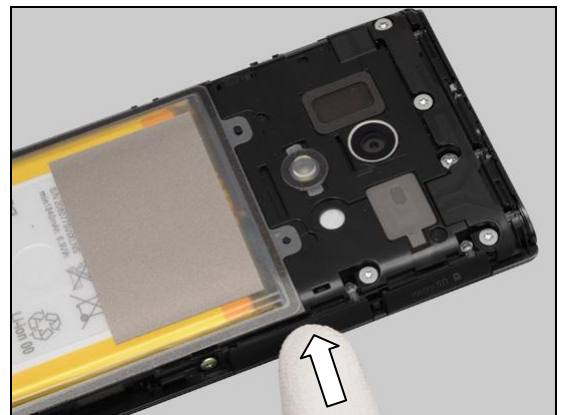
## Reassembly

**Use an air gun to clean the Cap SIM and its hole!  
Do not touch the sealing rubber of the Cap SIM!  
Make sure that the Cap SIM is clean and no dirt,  
particles and fiber attached on it! Otherwise replace a  
new one.**

Gently insert the plug of the Cap SIM into the socket with fingers as shown in picture.



Press to secure its position.

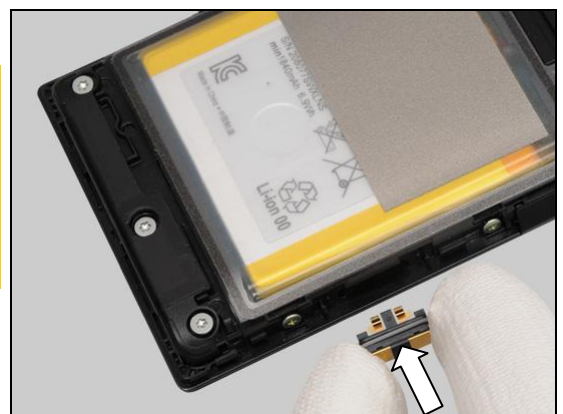


**Check that if the Caps are securely installed as shown  
in picture!**



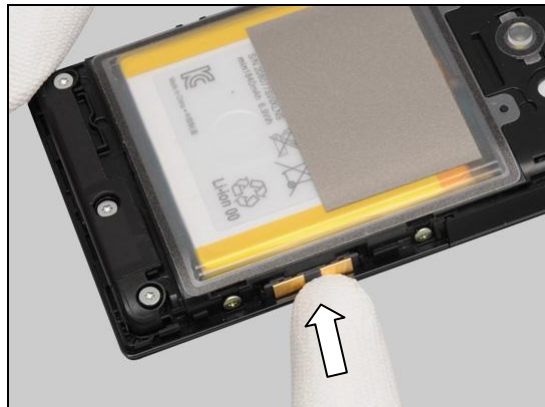
**Use an air gun to clean the Charger PAD connector  
and its hole!  
Do not touch the O-Ring of the Charger PAD connector!  
Make sure that the Charger PAD connector is clean and  
no dirt, particles and fiber attached on it! Otherwise  
replace a new one.**

Gently insert the Charger PAD connector into the slot as shown in picture.



## Reassembly

Press to secure its position.



**Check that if the Charger PAD connector is securely installed as shown in picture!**

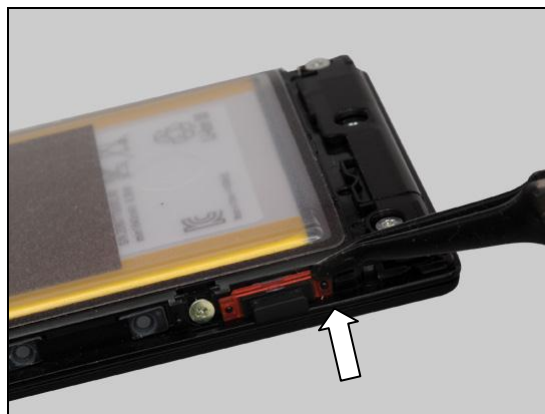


Place the Key Camera on its proper position as shown.

**Note the orientation of the Key Camera to be installed!**



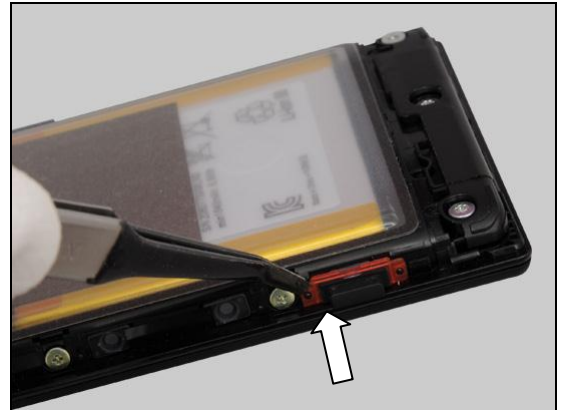
Press this side to position the Key Camera by using pin and hole.





## Reassembly

Do the same on this side as shown in picture.

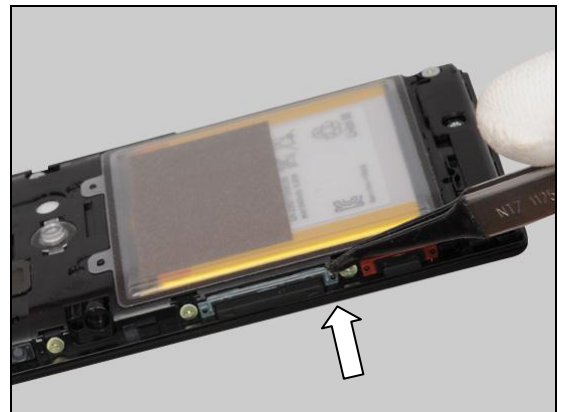


Place the Key Volume on its proper position as shown.

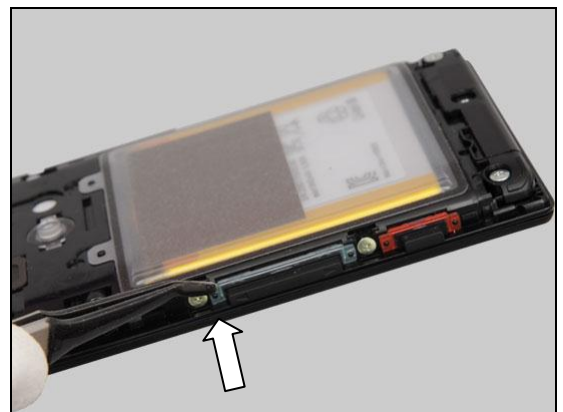
**Note the orientation of the Key Volume to be installed!**



Press this side to position the Key Volume by using pin and hole.



Do the same on this side as shown in picture.

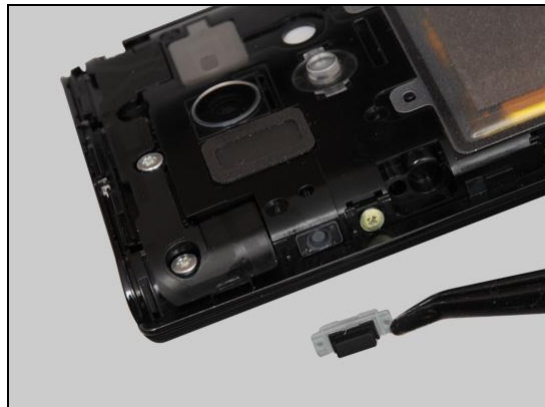




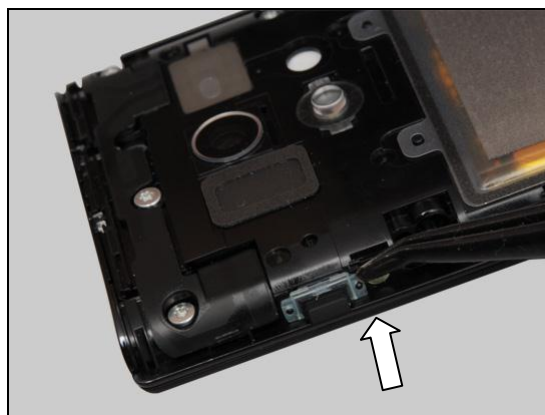
## Reassembly

Place the Key Power on its proper position as shown.

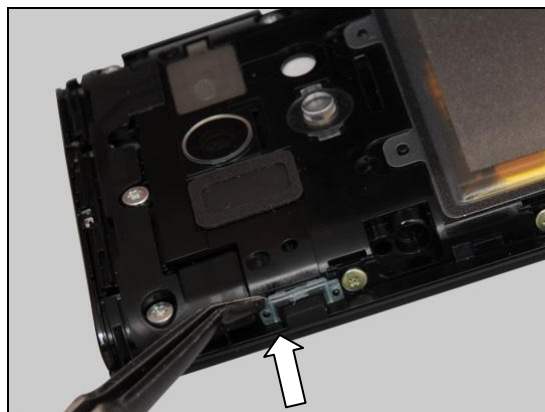
**Note the orientation of the Key Power to be installed!**



Press this side to position the Key Power by using pin and hole.



Do the same on this side as shown in picture.



### 5.7 Cover Back

Securely place the Cover Back on its proper position as shown.

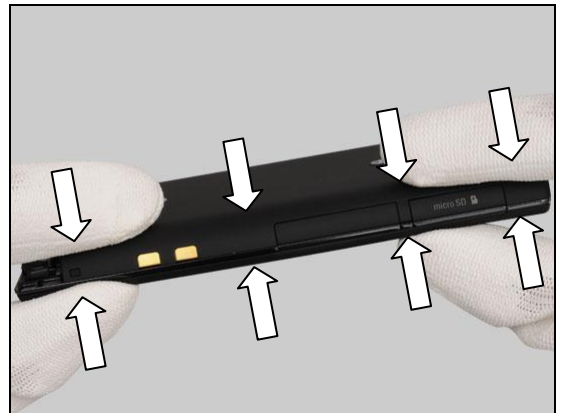


## Reassembly

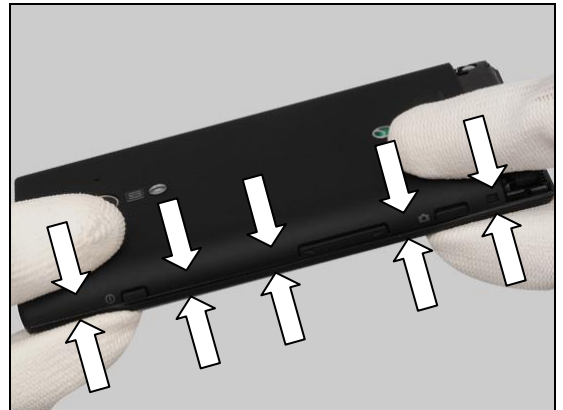
Press to snap the hooks of the Cover Back.



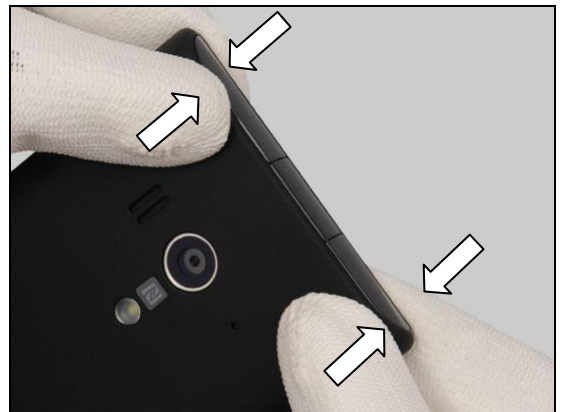
Press this side to snap the hooks.



Do the same on the opposite side.



Do the same on this side.



## Reassembly

Do the same on the opposite side.

### 5.8 Core Unit Label

Check that the proper label format is loaded in the Zebra printer and write a new Label by using the 'LabelMake' software.

Securely place the Core Unit Label on its correct position as indicated by the screw hole and the blue lines.

**One label only is allowed!**



Press along the surface to make the label securely attached.



Press this side to make it securely attached.



## Reassembly

### 5.9 Cover Bottom

Securely place the Cover Bottom on its correct position as shown.

Press to snap the hooks of Cover Back.



### 5.10 SIM Connector

**Do not touch the sealing rubber of the Cap SIM!**  
**Make sure that the Cap SIM is clean, no dirt, particles and fiber attached on it!**

Pull upwards to release the Cap SIM with fingers.



Insert the SIM Connector into the slot.

**Make sure the correct direction of the SIM Connector!**



## Reassembly

Push the SIM Connector into the bottom.



**Use an air gun to clean the Cap SIM and its hole!  
Do not touch the sealing rubber of the Cap SIM!  
Make sure that the Cap SIM is clean and no dirt,  
particles and fiber attached on it! Otherwise replace a  
new one.**

Press to snap the Cap SIM.





## 6 Revision History

Rev.	Date	Changes / Comments
1	2012-Jul-27	Initial release
2	2012-Sep-14	Update chapter 4.22 and 4.29, add chapter 4.39